

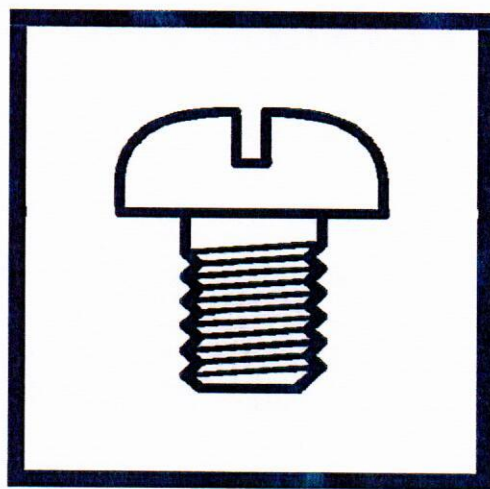
# GLOBAL

**WF 1575-LH / WF 1575B-LH / WF 1575-LH AUT**

---

Cylinder-bed Single needle unison-feed loolstitch machine

---



---

Operation instruction & Parts book

# CONTENTS

## Operation instruction

1. Brief introduction	1
2. Main specification	1
3. Machine installation	1
4. Installing the knee lifter	2
5. Setting the waste oil collector	2
6. Tension of belt	2
7. Installing the belt cover	3
8. Lubrication	3
9. Setting the needle	4
10. Threading the bobbin thread.	4
11. Installing the thread tension for bobbin thread winder	4
12. Winding bobbin thread.	4
13. Threading the needle thread.	5
14. Stitch length.	5
15. Thread tension	5
16. Adjusting thread take-up spring	6
17. Presser foot lift	6
18. Pressure of presser foot.	6
19. Adjusting needle guard plate	6
20. Reset of safety clutch.	7
21. Adjusting hook thread opener	7
22. Timing between needle and rotating hook	7
23. Alternating lift amount of presser feet	8
24. Adjusting the cutter	8
25. Stop position.	8
26. Settings for different speeds	9
27. Troubleshooting	9

# CONTENTS

## Parts book

1. Frame & miscellaneous cover components.....	10
2. Upper shaft driving & balance components.....	12
3. Needle bar rocking components.....	14
4. Upper feed mechanism components.....	16
5. Feed mechanism components.....	20
6. Hook shaft & lower shaft components.....	24
7. Feed mechanism components.....	26
8. Knee lifting cimpnents.....	28
9. Lubrication components.....	29
10. Belt cover.....	30
11. Lower thread winder mechanism components.....	31
12. Thread tension components.....	32
13. Gauge components—optionals.....	33
14. Binder components—optional parts.....	34
15. Accessories parts.....	35
16. Thread stand components.....	36

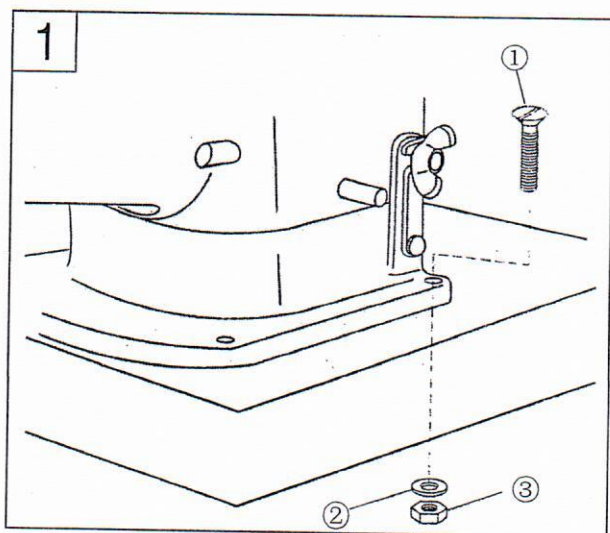
# Operation instruction

## 1. Brief introduction

This compound feed sewing machine is designed with unique feed mechanisms, which make sewing of uneven and thick materials easily. Smooth, uniform and neat stitches are promised. The machine runs with high speed and low noise thanks for its vertical-axis rotating hook, sliding lever take-up and synchronized belt driven mechanisms. It is designed for sewing of shoes, caps, sofa and bag, etc, and specially for sewing cylindrical or arc products.

## 2. Main specification

	WF 1575-LH AUT	WF 1575-LH	WF 1575B-LH
Application	Medium and heavy material, heavy material		Medium and heavy material
Max sewing speed	2500s. p. m		
Max stitch length	6mm		
needle bar stroke	36mm		
Needle	DP×17 (Nm125~Nm180) standard Nm160 (23#)		
Lubrication	Oil wick		
Rotating hook	Vertical hook		
Presser foot lifter height	9mm by hand, 16mm by knee/ lifter		
Motor power	Servo motor	370W	

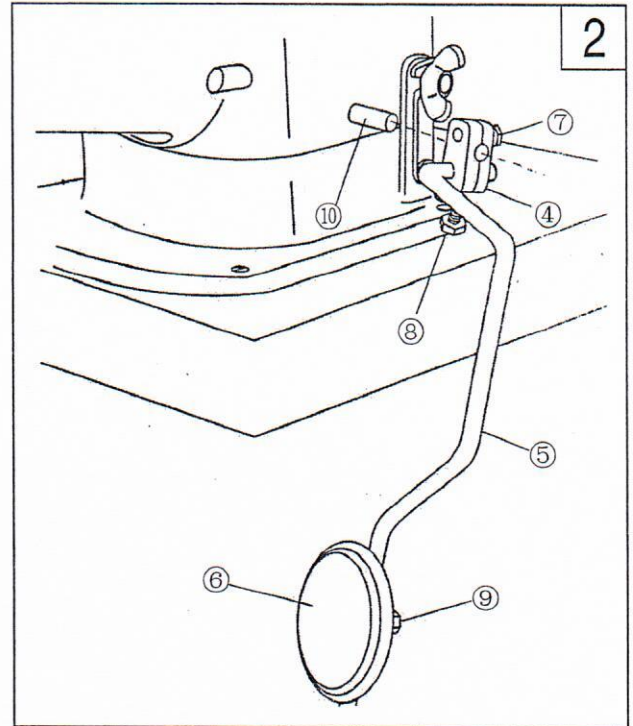


## 3. Machine installation (Fig.1)

Fix the base with screw ①, washer ② and nut ③ on the four holes of table, then fix the machine head on the base.

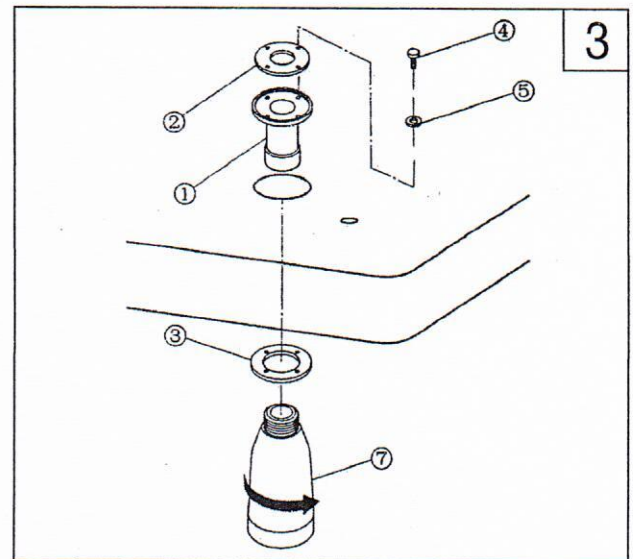
#### 4. Installing the knee lifter (Fig.2)

1. Fix the bar ⑤ and the pad ⑥ in the connector ④;
  2. Adjust the direction of pad with screws ⑦, ⑧ and ⑨.
  3. Fix the connector ④ on the shaft ⑩.
- Note: if need to put the machine backward, please first to loosen the screw ⑦ to uninstall the knee lifter.



#### 5. Setting the waste oil collector (Fig.3)

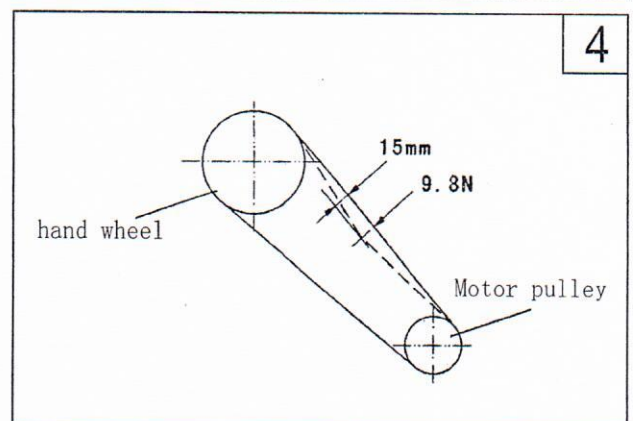
1. Install oil bolt ①, oil seal ② and washer ③ on the table, then fix them.
2. Screw oil pot ⑦ up to oil bolt ①.

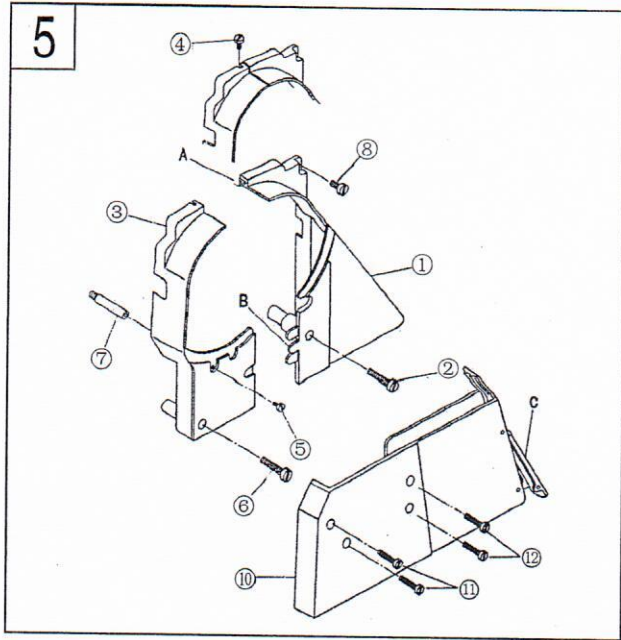


#### 6. Tension of belt (Fig.4)

Adjust the height of motor to regulate the tension of belt. Press the center of belt with a force of 9.8N, displacement should be 15 mm. That means tension is proper.

Note: Turn off the power and make sure the motor stopped before adjustment.

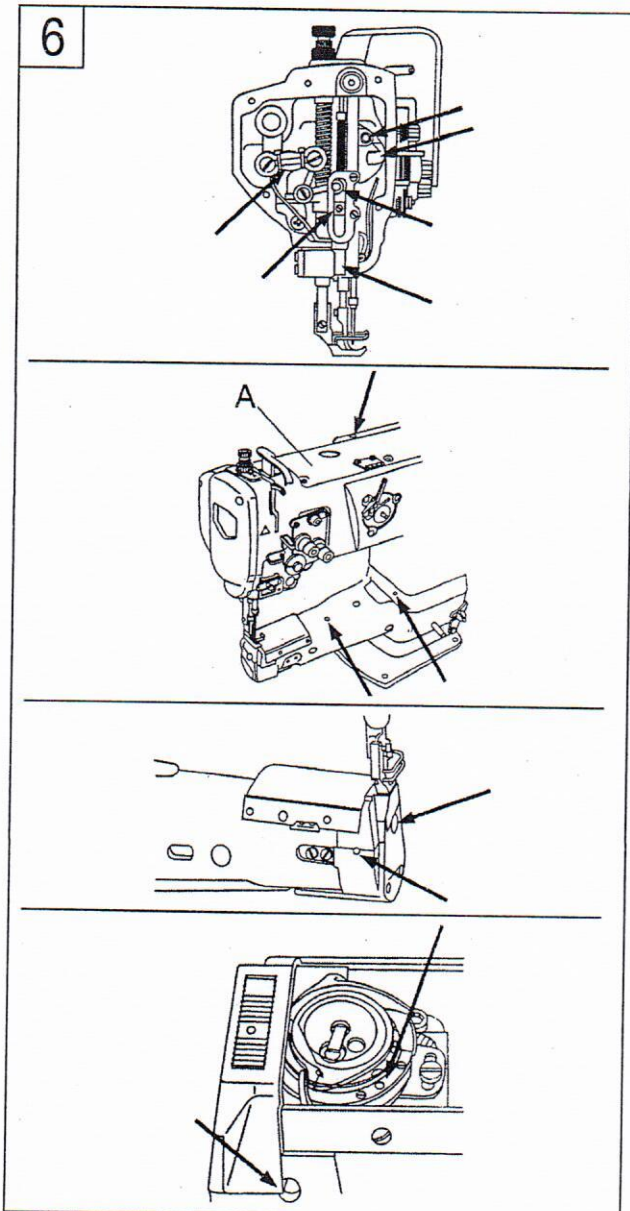




## 7. Installing the belt cover (Fig.5)

1. Screw the belt cover supporting pole ⑦ into the screw hole.
2. Install belt cover (R) ① to the machine head by setscrew ② and ⑧.
3. Setting belt cover (L) ③ to the pawl A and B of cover (R).
4. Fix belt cover (L) ③ by set screw ④, ⑤ and ⑥.
5. Fix the lower belt cover ⑩ by set screw ⑪ and ⑫.

Note: After installation, make sure the belt cover is not touched with the belt and hand wheel. If you need to put up the machine from backward, please install the belt cover C to down belt cover component ⑩.

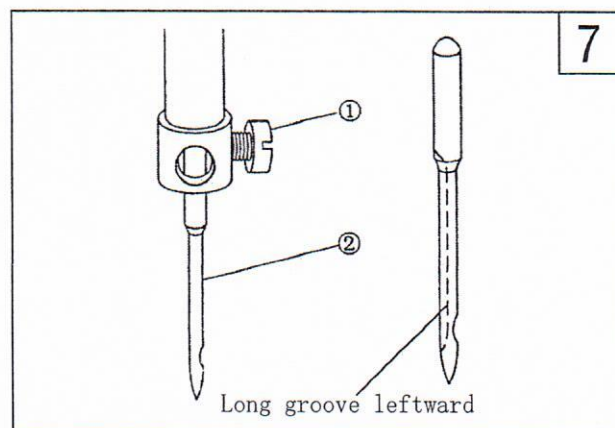


## 8. Lubrication (Fig.6)

1. Drip oils to the signed position by arrows every day.
2. Oil the machine before its initial running or after a long time idle at signed point and, remove top cover A, drip oils to all felts and wicks inside the arm.
3. The hole in red color should be oiled.

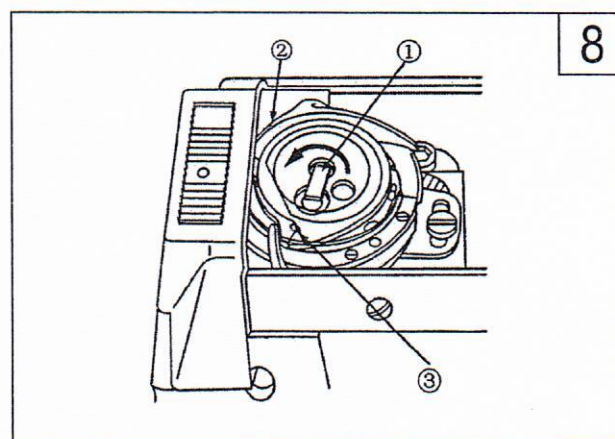
## 9. Setting the needle (Fig.7)

1. Turn the handwheel to raise the needle bar to its highest point.
2. Loosen needle set screw ② and have the long groove of the needle ① face leftward.
3. Insert needle fully.
4. Tighten the set screw ①.



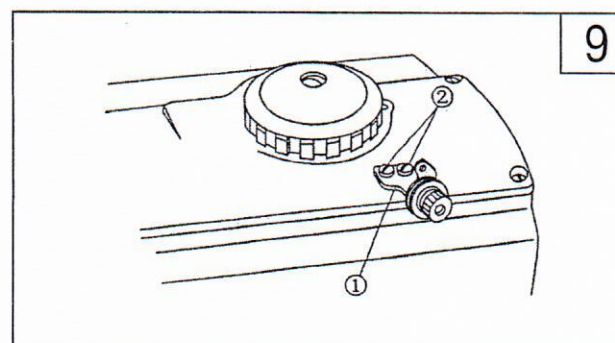
## 10. Threading the bobbin thread (Fig.8)

1. Lift the latch ① and take out the bobbin.
2. Insert bobbin correctly and close the latch.
3. Draw bobbin thread through slot ②, tension spring and hole ③.
4. Bobbin should turn in the direction shown by the arrow when draw the bobbin thread.



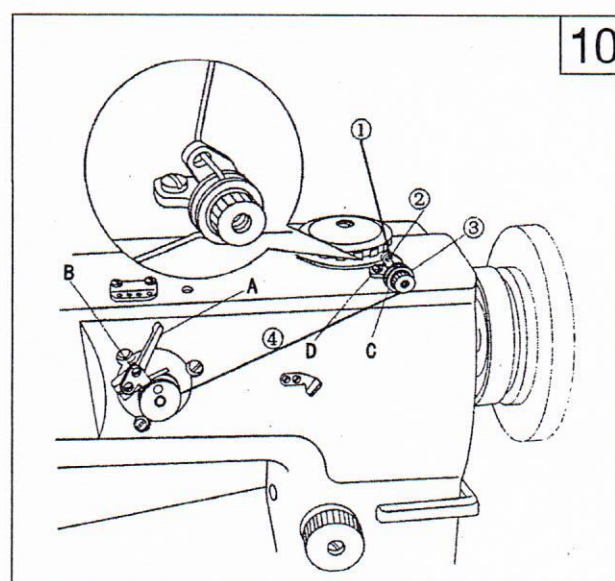
## 11. Installing the thread tension for bobbin thread winder (Fig.9)

Mount thread tension ① onto the top cover with set screw ②.

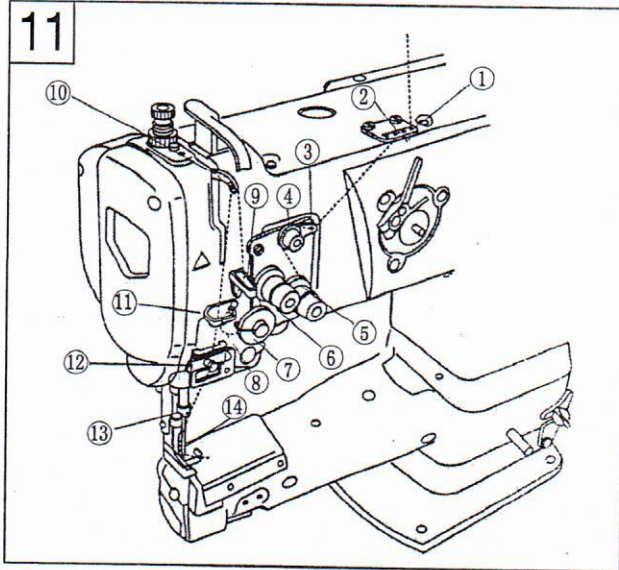


## 12. Winding bobbin thread (Fig.10)

1. Thread in sequence ①~④, then wind thread around the bobbin several circles.
2. Press latch A.
3. Loosen screw B to adjust the latch to get the proper thread amount of 80% of the bobbin capacity.
4. If thread wound unevenly, move guide C to regulate and fasten with screw D.
5. If the proper thread amount acquired, the latch will disengage automatically.

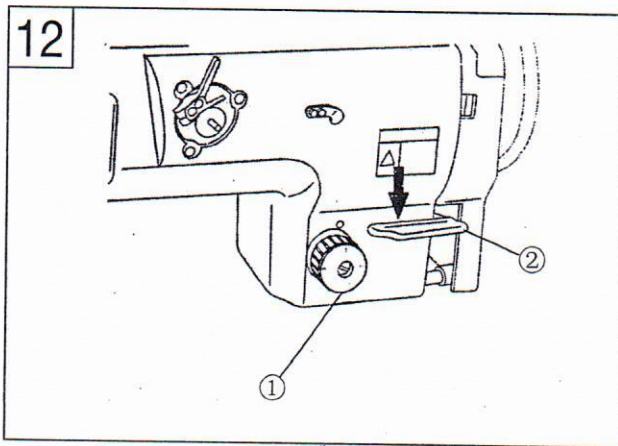






### 13. Threading the needle thread (Fig.11)

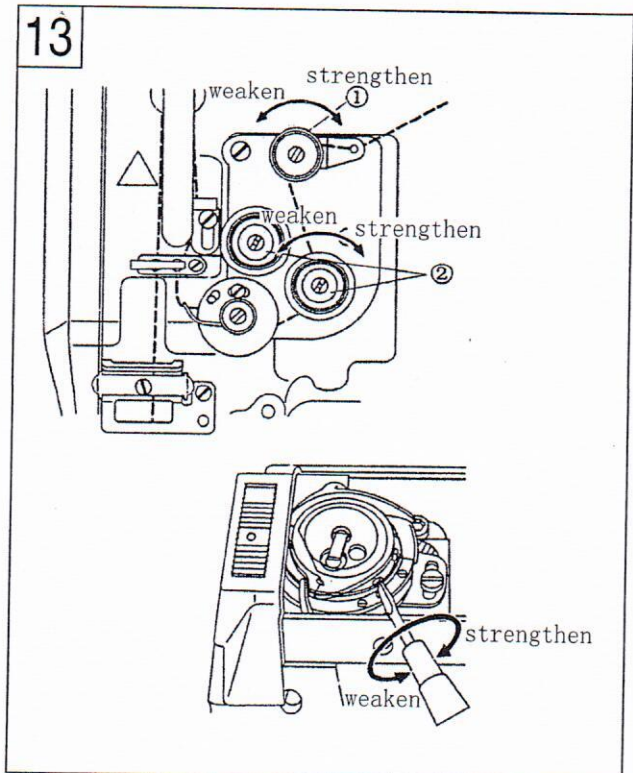
Thread in sequence as shown in the illustration.



### 14. Stitch length (Fig.12)

Turn the stitch dial ① leftward or rightward to get your required stitch length.

Press the reserve lever ② to start reserve sewing, loose it to restore normal sewing.



### 15. Thread tension (Fig.13)

#### 1. Tension of needle thread

Turn the tension nut ① clockwise to short the thread remains after cut, turn counter clockwise to reduce the tension.

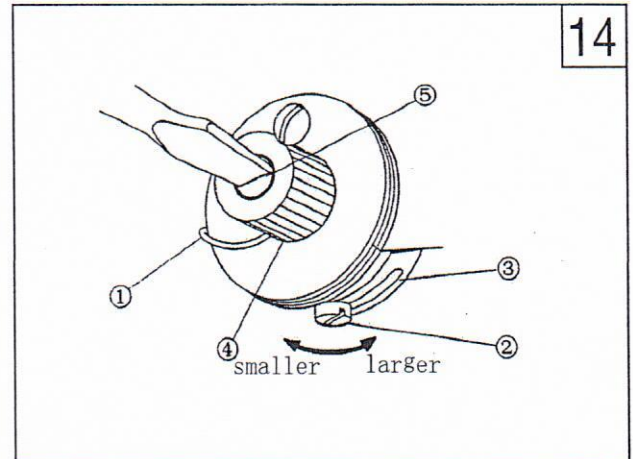
Turn the tension nut ② clockwise to increase needle thread tension, turn counter clockwise to reduce the tension.

#### 2. Tension of bobbin thread

Turn the tension nut ③ clockwise to increase bobbin thread tension, turn counter clockwise to reduce the tension.

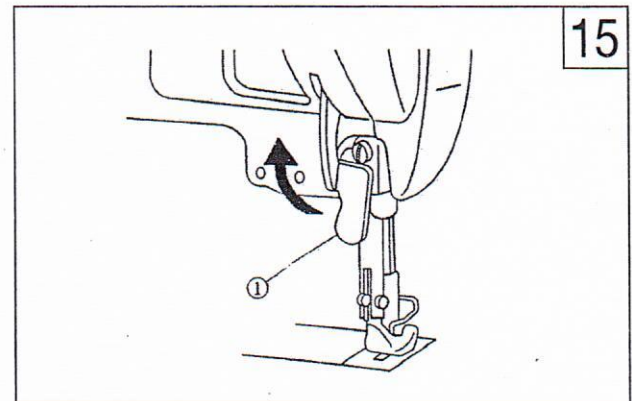
## 16. Adjusting thread take-up spring (Fig.14)

1. To change the take-up spring swing range:
  - a. Loosen set screw ② and move plate ③ to adjust the take-up spring.
  - b. Move plate rightward to increase take-up spring swing range, move leftward to reduce swing range.
2. To change the tension of take-up spring: Loosen nut ④, turn shaft ⑤ counter clockwise to increase tension, turn clockwise to reduce the tension.



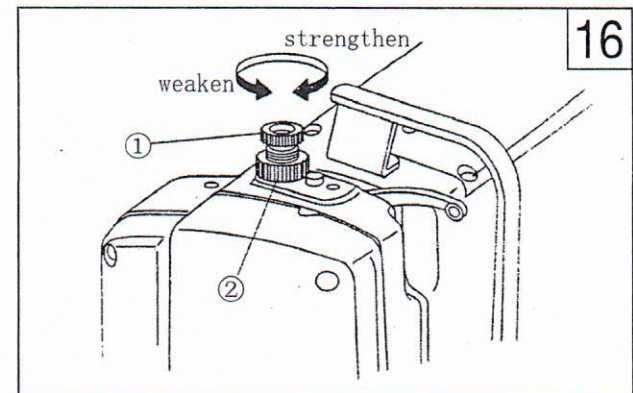
## 17. Presser foot lift (Fig.15)

1. When the presser foot on the lower resting position, raise the foot lift lever ① as illustration. The presser foot rises 9mm then stop.
2. Lower the lift lever to restore the presser foot.



## 18. Pressure of presser foot (Fig.16)

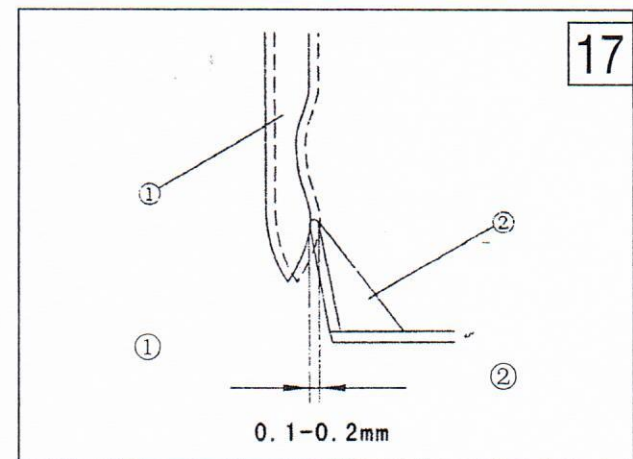
Turn the regulating bolt ① rightward to increase the pressure, turn counter clockwise to reduce the pressure. Tighten nut ② after adjustment.

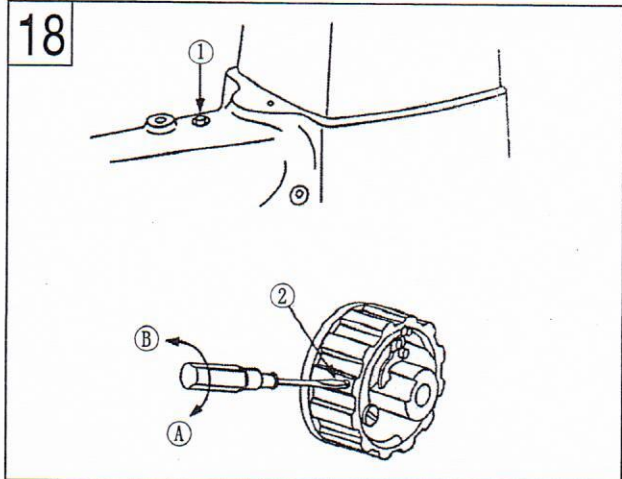


## 19. Adjusting needle guard plate (Fig.17)

Check the position of needle guard plate after change the rotating hook. The standard position of the guard plate ② is 0.1-0.2mm against needle ①. If the clearance is not right, bend the guard plate to adjust.

1. To bend the guard plate inward, insert a screw driver outside.
2. To bend the guard plate outward, insert a screw driver inside of the plate.

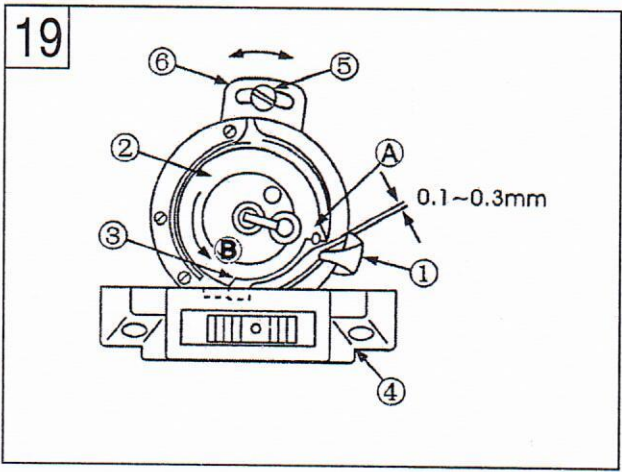




### 20.Reset of safety clutch (Fig.18)

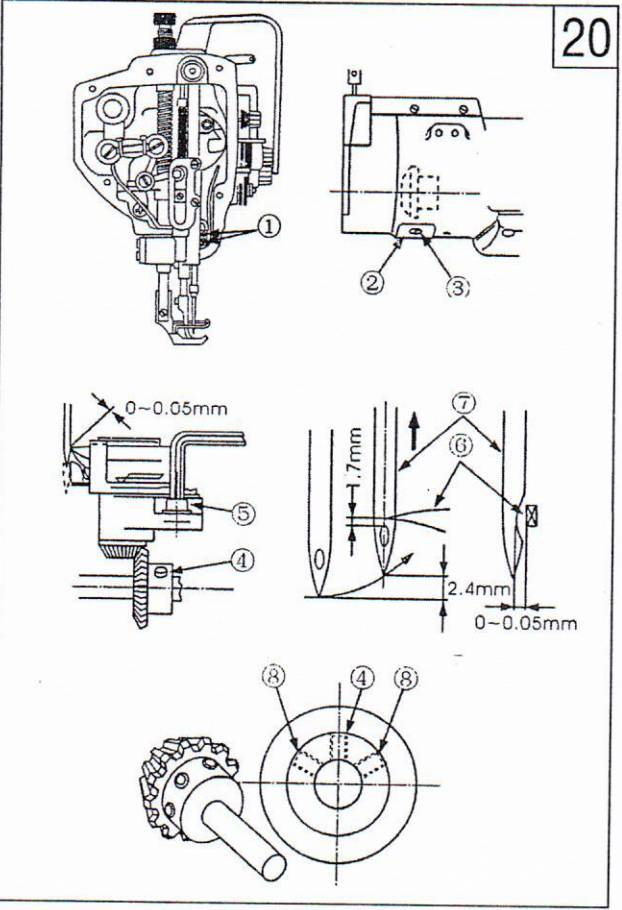
In case the rotating hook is applied with a over strong force during operation, the safety clutch start working. The rotating hook stop turn even the hand wheel is still turning.

1.Reset the safety clutch:  
 a.Clean the locked thread in the hook  
 b.Press button ① down on the bed. Firmly turn the hand wheel reversely at the same time. 2. Adjust the force  
 Turn the screw ② to Direction A to increase the force of clutch and turn the screw to Direction B to decrease the force.



### 21.Adjusting hook thread opener (Fig.19)

1.Turn the hand wheel in normal direction to move the thread opener ① to its ultimate position.  
 2.Turn the bobbin cap ② in direction B showed by arrow, to make stopper (the projection part) against the notch under the bottom of the needle plate ④.  
 3.Loosen the screw ⑤ and move the plate ⑥, adjust the clearance between horn A and the opener to 0.1~0.3mm, tighten the set screw ⑤.



### 22.Timing between needle and rotating hook (Fig.20)

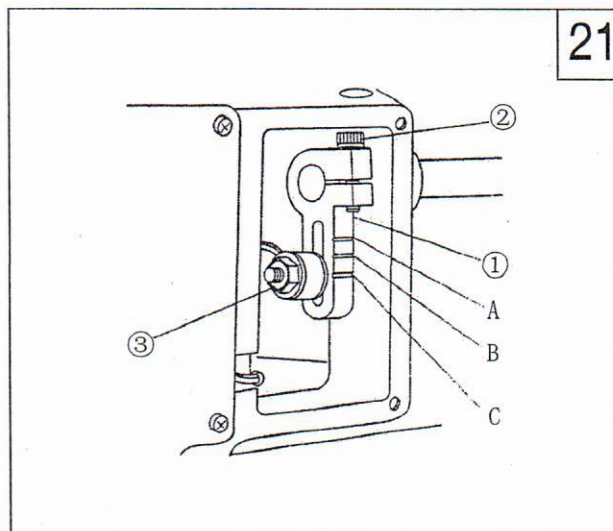
1.Turn the stitch dial to 0.  
 2.Turn the hand wheel to lower the needle bar to its lowest position and loosen the screw ①.  
 3.The standard height of needle bar: when needle bar is lifted by 2.4mm from its lowest point, the clearance between top of the needle hole and hook tip is 1.7 mm.  
 4.Loosen the screw ③ and move the cover ②, loosen the screw ④ and ⑧.  
 5.Loosen the set screw ⑤, and move the hook saddle leftward or rightward to make the clearance between hook tip and needle ⑦ to 0~0.05mm . Tighten the screw.  
 6.Make the hook tip align with the center of the needle bar. Tighten screw ④.  
 7.Turn the hand wheel clockwise and tighten the screw ⑧.

### 23. Alternating lift amount of presser feet (Fig. 21)

To adjust the list amount of presser feet by moving upper feed crank ① up or down within the range of the long slot. Move the crank up to increase alternating lift amount, move down to reduce. Tighten nut ③ after adjusting.

In case the lift amount of the two presser feet is different, move the two feet to align with the needle plate surface, loosen crank set screw ②. Turn the hand wheel in normal direction, the lift amount of outer foot is much than that of inner foot. Turn the hand wheel reverse, the lift amount of outer foot is less than that of inner foot. Tighten screw ② after adjustment.

Remove the right side of the window plate, the upper feed crank ① can be observed.

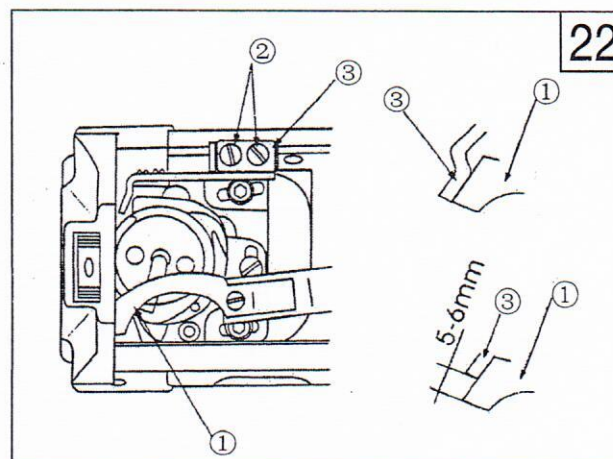


Presser feet alternating lift amount

Mark A	about 5mm
Mark B	about 4mm
Mark C	about 3mm

### 24. Adjusting the cutter (Fig. 22)

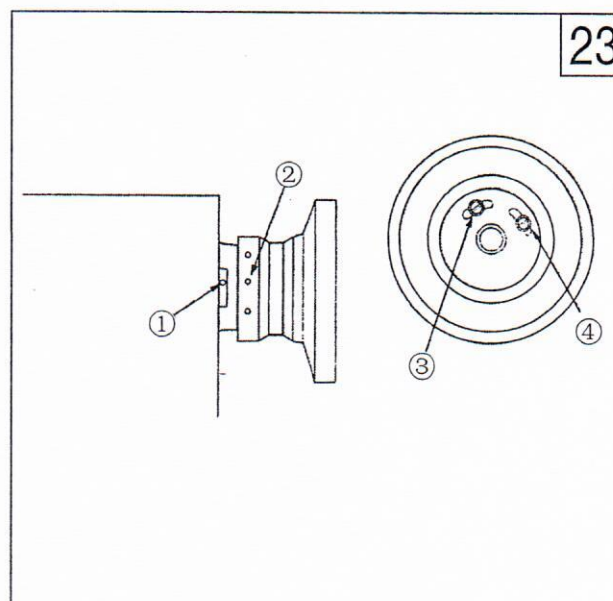
1. Move the movable knife ① to upmost position.
2. Loosen the screw ② to move the fixed knife ③ leftward or rightward to adjust.
3. When the distance between the front tip of move knife and movable knife is 5-6mm, the knife pressure will be impressed.
4. After the movable knife is back, there should be a movement of 0.5~1mm at its contrail.



### 25. Stop position (Fig. 23)

1. Align the mark ① on the casting with the mark ② on the hand wheel, the meaning of every stop position, please refer to below table.
2. To adjust the needle up position by screw ③, to adjust the needle down position by screw ④.

Mark on the hand wheel	
White-white	Needle up
Yellow	Needle down
Red	For adjusting the cutting driven cam
No color	For lifting needle by reverse turn



## 26. Settings for different speeds

Alternating lift amount	Stitch length less than 6mm	Stitch length 6-9mm
Less than 2.5mm	2,500rpm	1,800rpm
2.5~4mm	2,200rpm	1,800rpm
4~4.75mm	1,800rpm	1,800rpm
4.75~6.5mm	1,600rpm	1,600rpm

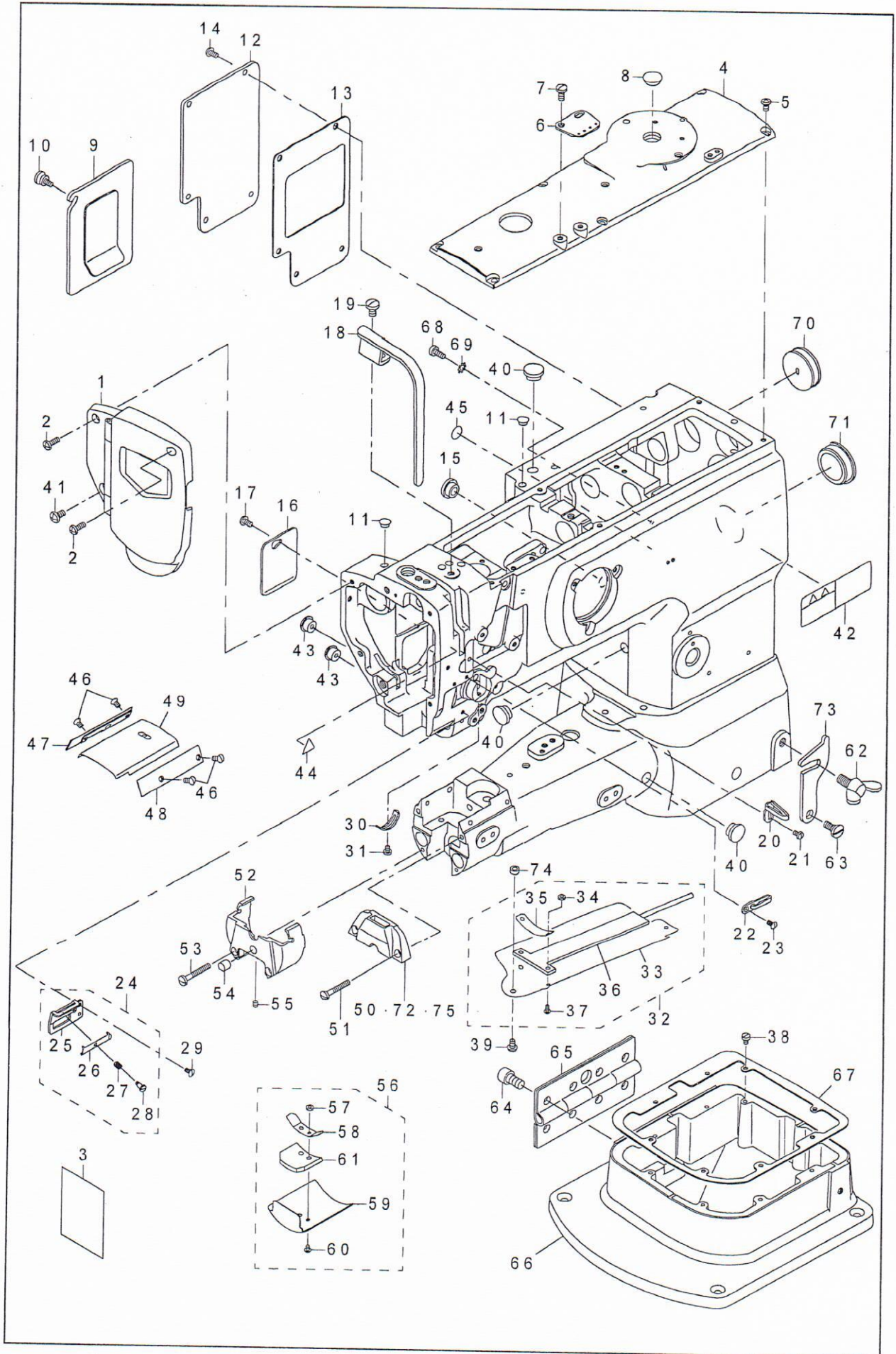
Make proper settings for different speeds accordingly. Do not surpass the standard.

## 27. Troubleshooting

Trouble	Possible cause	Solution
1. Thread breaking (2-3mm thread left on the cloth)	<ul style="list-style-type: none"> <li>① Damage on the rotating hook slots, needle point, hook tip and needle plate.</li> <li>② Needle thread is too tight.</li> <li>③ Collision between needle and rotating hook.</li> <li>④ Rotating hook oiled insufficiently.</li> <li>⑤ Needle thread is too loose.</li> <li>⑥ Thread take-up spring too rigid and small movement amount.</li> <li>⑦ Too fast or slow timing of rotating hook and needle.</li> </ul>	<ul style="list-style-type: none"> <li>○ Polish the damaged position, thorns with sand paper. Polish inner fixed point of rotating hook with rasp.</li> <li>○ Weaken the needle thread tension.</li> <li>○ Reference (Timing between needle and rotating hook).</li> <li>○ Adjust oil amount (refer to Lubrication).</li> <li>○ Increase the needle thread tension.</li> <li>○ Reduce the rigidity of take-up spring and enlarge movement amount.</li> <li>○ Reference (Timing between needle and rotating hook).</li> </ul>
2. Skipped stitch	<ul style="list-style-type: none"> <li>① Too fast or slow timing of rotating hook and needle.</li> <li>② Presser foot pressure too weak.</li> <li>③ Clearance between the top of needle hole and the rotating hook tip not proper.</li> <li>④ Wrong needle.</li> </ul>	<ul style="list-style-type: none"> <li>○ Reference (Timing between needle and rotating hook).</li> <li>○ Tighten the pressure adjusting bolt.</li> <li>○ Reference (Timing between needle and rotating hook).</li> <li>○ Replace the needle with correct one.</li> </ul>
3. Loose stitch	<ul style="list-style-type: none"> <li>① Bobbin thread doesn't pass under the tension spring of bobbin case.</li> <li>② Roughness on the rotating hook slots.</li> <li>③ Bobbin stops rotating.</li> <li>④ Bobbin thread too loose.</li> <li>⑤ Bobbin thread too tight.</li> <li>⑥ Damage of the needle point.</li> </ul>	<ul style="list-style-type: none"> <li>○ Reference (Threading the bobbin).</li> <li>○ Polish with sand paper or rasp.</li> <li>○ Replace bobbin or rotating hook.</li> <li>○ Increase the bobbin thread tension.</li> <li>○ Reduce the bobbin thread tension.</li> <li>○ Replace the needle.</li> </ul>

# Parts book

# 1. Frame & miscellaneous cover components

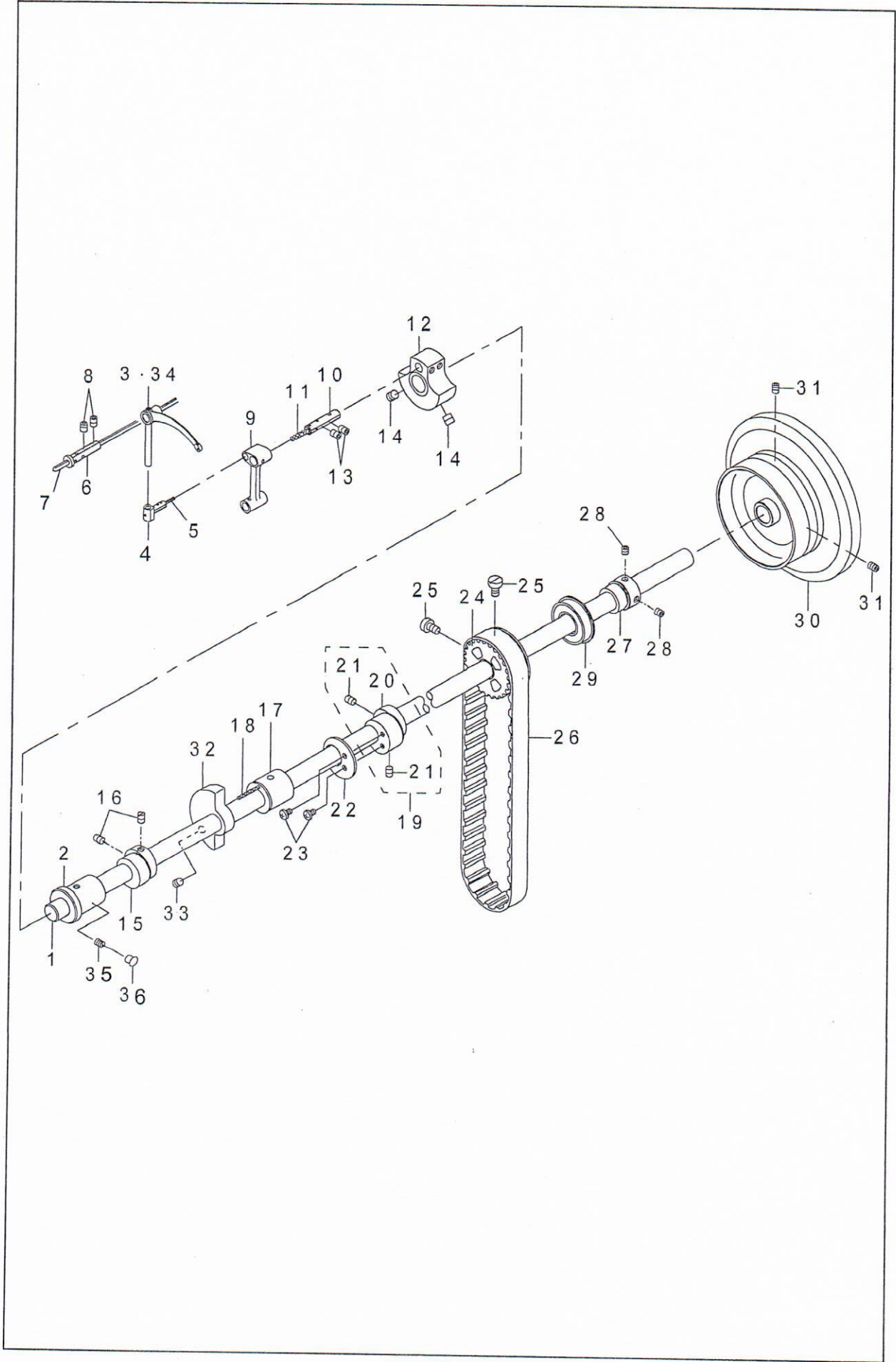


# 1.Frame & miscellaneous cover components

1	40016798	FACE PLATE ASM.	1
2	SS4111215SP	SCREW 11/64-40 L=12	2
3	40019114	LUBRICATION SUPPLEMENT	1
4	21331301	TOP COVER B	1
5	SS4110815SP	SCREW 11/64-40 L=8	6
6	21355904	ARM THREAD GUIDE	1
7	SS7621040SP	SCREW 3/16-32 L= 9.5	2
8	TA1450404RO	RUBBER PLUG D=14.5 L=4	1
9	21331756	WINDOW PLATE A ASM.	1
10	21331202	SETSCREW	1
11	TA0750404RO	PLUG D=7.5 L=3.5	2
12	21331806	WINDOW PLATE B	1
13	21332002	WINDOW PLATE PACKING B	1
14	SS4110815SP	SCREW 11/64-40 L=8	5
15	TA1250504RO	RUBBER PLUG	2
16	21332309	SIDE COVER	1
17	SS4110815SP	SCREW 11/64-40 L=8	1
18	21331608	BALANCE COVER	1
19	SS7150910TP	SCREW 15/64-28 L=9	1
20	21355805	THREAD GUIDE	1
21	SS5090610SP	SCREW 9/64-40 L=6	1
23	SS2090710TP	SCREW 9/64-40 L=7.2	1
24	40039838	THREAD GUIDE ASM.	1
25	40039839	THREAD GUIDE PLATE	-1
26	17912106	NEEDLE THREAD PRESSER PLATE	1
27	B1132521000	THREAD PRESSER PLATE SPRING	-1
28	SD0380551SL	HINGE SCREW D= 3.80 H= 5.5	1
29	SS2090710TP	SCREW 9/64-40 L=7.2	1
30	B3138512000	TAKE-UP SPRING ADJUSTING PLATE	1
31	SS7090520TP	SCREW 9/64-40 L= 4.5	1
32	21426754	SYLINDER COVER ASM.	1
33	21426705	SYLINDER COVER	-1
34	NM6030003SC	NUT M3	-2
35	21426903	FELT PRESSER PLATE	1
36	21426853	SYLINDER COVER FELT ASM.	-1
37	SM4030601SC	SCREW M3 X 6	2
38	TA0550604RO	RUBBER PLUG	1
39	SS5110710SP	SCREW 11/64-40 L=7	1
40	TA1250504RO	RUBBER PLUG	3
41	SS4150915SP	SCREW 15/64-28 L=9	1
42	CM301300001	SAFETY LABEL	1
43	TA1100604RO	PLUG	2
44	CM300200001	ATTENTION SEAL	1
45	22901805	GROUND MARK	1
46	SS2090520SL	SCREW 9/64-40 L=5	4
47	21426606	BED SLIDE SIDE PLATE LEFT	1
48	23100506	BED SLIDE SIDE PLATE RIGHT	1
49	21220413	BED PLATE	1
50	21221908	THOAT PLATE	1
51	SS7112810SP	SCREW 11/64-40 L=28	2
52	40090318	THROAT PLATE BASE	1
53	SS7113110SP	SCREW 1/64-40 L=30	2
54	40090323	FEEED BASE SUPPORT	1
55	SM8040402TP	SCREW M4X0.7 L=4	1
56	21426051	THROAT PLATE BASE COVER ASM.	1
57	NM6030003SC	NUT M3	-2
58	21426101	THROAT PLATE BASE COVER SPRING	-1
59	21426002	THROAT PLATE BASE COVER	-1
60	SM4030401SC	SCREW M3X0.5 L=4	2
61	21425905	THROAT PLATE BASE COVER FELT	-1
62	B1116246000	WING BOLT	1
63	SD0800352SP	HINGE SCREW D= 8 H= 3.5	1
64	SM6081552TP	SCREW M8 L=15	8
65	21426507	HINGE	1
66	21426309	BED HOLDING BASE	1
67	21426408	BED HOLDING BASE PACKING	1
68	SS6111140SP	SCREW 11/64-40 L=11	1
69	WT0530002KS	TOOTHED WASHER D=5.3	1
70	10201200	RUBBER PLUG	1
71	22619100	CAP	1
72	B1105340000	THROAT PLATE	1
73	B1117246000	HOOK	1
74	B3013141HOB	WASHER	1
75	40092676	THOAT PLATE	1



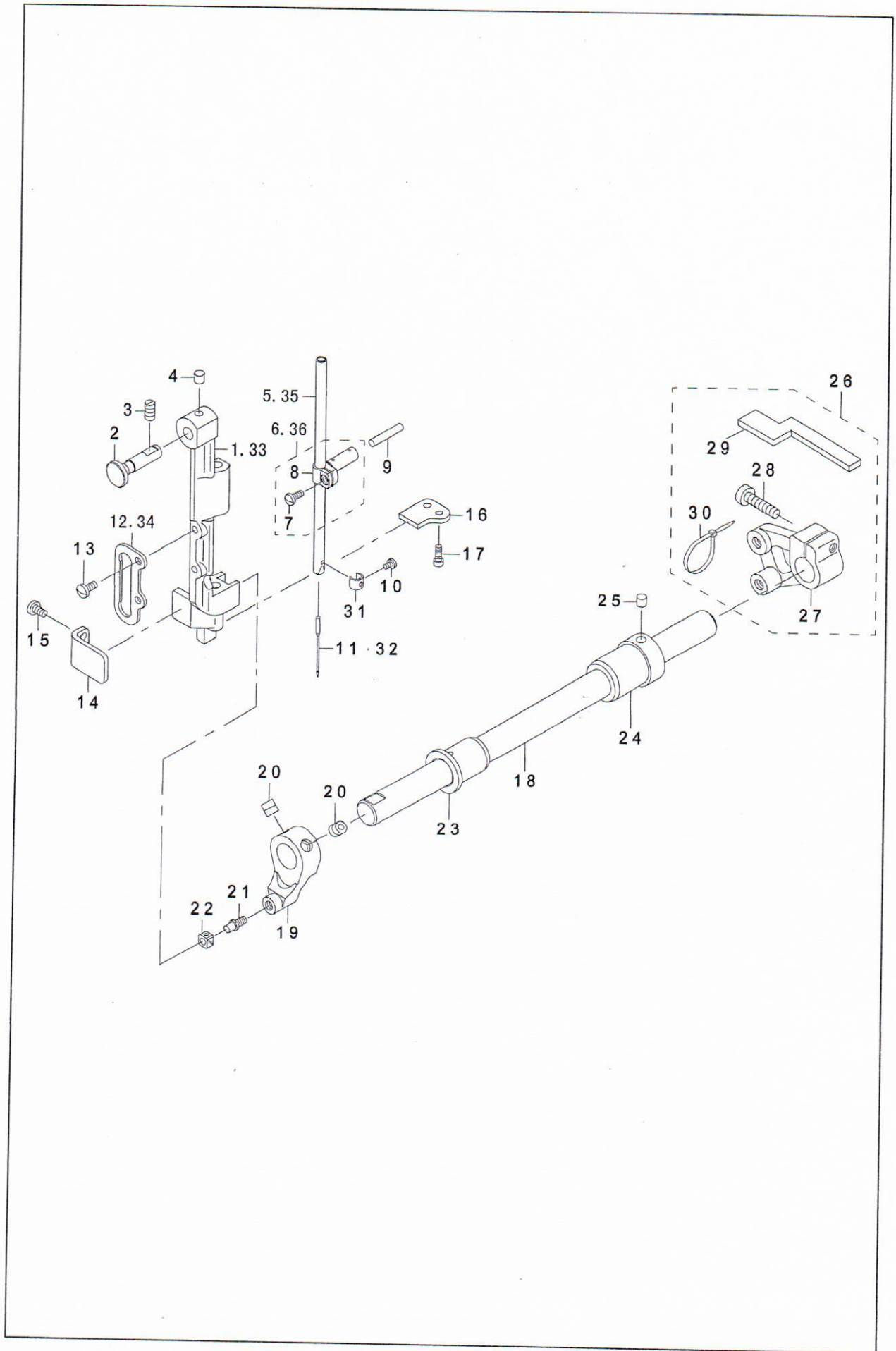
## 2.Upper shaft driving & balance components



## 2.Upper shaft driving & balance components

1		21332705	UPPER SHAFT	1
2		21333000	UPPER SHAFT FRONT METAL	1
3		21402102	THREAD TAKE-UP LEVER	1
4	#1	22605406	TAKE-UP LEVER THRUST PIN	1
5		CQ202000000	OIL WICK	3
6		B1906051000	TAKE-UP LEVER PIN	1
7		CQ303000000	OIL WICK	2
8		SS8150822TP	SCREW 15/64-28 L=8	2
9		21339106	NEEDLE BAR CRANK ROD	1
10		B1210051000	NEEDLE BAR CRANK PIN	1
11		CQ505000000	OIL WICK	3
12		21332507	COUNTER WEIGHT (A) (36MM)	1
13		SS8150822TP	SCREW 15/64-28 L=8	2
14		SM8080812TP	SCREW M8X8	2
15		21339502	UPPER FEED CAM (3.5)	1
16		SS8660810TP	SCREW 1/4-40 L=8	2
17		21333109	UPPER SHAFT INNER METAL	1
18		CQ202000000	OIL WICK	5
19		21336557	ECCENTRIC CAM A ASM.	1
20		21336508	ECCENTRIC CAM A	-1
21		SS8660810TP	SCREW 1/4-40 L=8	2
22		21353008	HORIZONTAL FEED CAM COVER	1
23		SS7110710SP	SCREW 11/64-40 L=7	2
24		22604904	UPPER SPROCKET	1
25		SS6661110SP	SCREW 1/4-40 L=11	2
26		21427109	TIMING BELT	1
27		21402300	UPPER SHAFT BEARING HOOK	1
28		SM8060602TP	SCREW M6X6	2
29		B1203512000	BUSHING REAR	1
30		21334008	FLYWHEEL	1
31		SS8150822TP	SCREW 15/64-28 L=8	2
32		21333406	BALANCER	1
33		SS8151550SP	SCREW 15/64-28 L=15	2
34	#2	B1905053000	THREAD TAKE-UP	1
35		SS8150710TP	SCREW 15/64-28 L=7	1
36		TA0750704R0	RUBBER PLUG	1

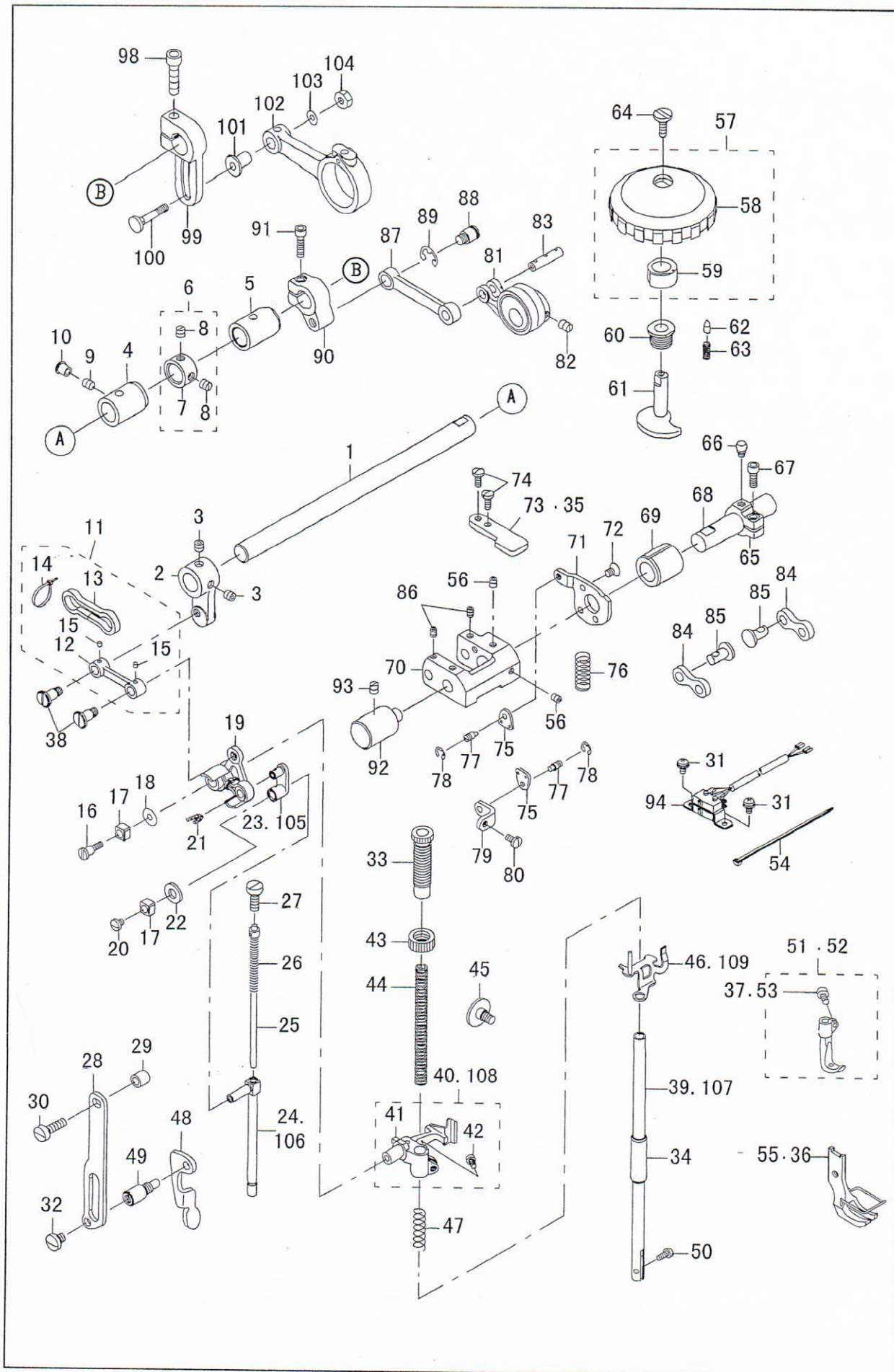
### 3. Needle bar rocking components



### 3. Needle bar rocking components

1	B1420563000	NEEDLE BAR FRAME	1
2	21405204	HINGE STUD	1
3	SS8151150TP	SCREW 15/64-28 L=10.5	1
4	22814909	FELT	1
5	40092246	NEEDLE BAR	1
6	B14110530A0	NEEDLE BAR CONNECTION ASM.	1
7	SS7090910SP	SCREW 9/64-40 L= 8.5	1
8	B1411053000	NEEDLE BAR CONNECTION	1
9	B1412051000	FELT	1
10	SS7080510TP	SCREW 1/8-44 L=4.5	1
11	M13517B1600	NEEDLE 135X17 #160	1
12	B1467563000	UPPER FEED BAR GUIDE	1
13	SS7110910TP	SCREW 11/64-40 L= 8.5	2
14	21338702	ROCKING BASE GUIDE	1
15	SS7110830SP	SCREW 11/64-40 L= 7.5	2
16	21338603	ROCKING BASE GUIDE (B)	1
17	SS6091022TP	SCREW	2
18	21338900	ROCKING SHAFT	1
19	21338801	ROCKING FRONT ARM	1
20	SM8080802TP	SCREW	2
21	B1410771000	STUD	1
22	B1414232000	SQUARE BLOCK	1
23	21339304	ROCKING SHAFT FRONT METAL	1
24	40027746	BUSHING REAR	1
25	22814909	FELT	1
26	21430053	ROCKING REAR ARM ASM.	1
27	21430004	ROCKING REAR ARM	1
28	SS6152440SP	SCREW 15/64-28 L=23.5	-1
29	21430103	ROCKING REAR ARM FELT	1
30	EA9500B0100	CABLE BAND	2
31	21338504	NEEDLE BAR THREAD RACK	1
32	M13517B1400	NEEDLE 135X17 #140	1
33	23002009	NEEDLE BAR FRAME	1
34	B1467563000	UPPER FEED BAR GUIDE	1
35	40092246	NEEDLE BAR	1
36	B14110530A0	NEEDLE BAR CONNECTION ASM.	1

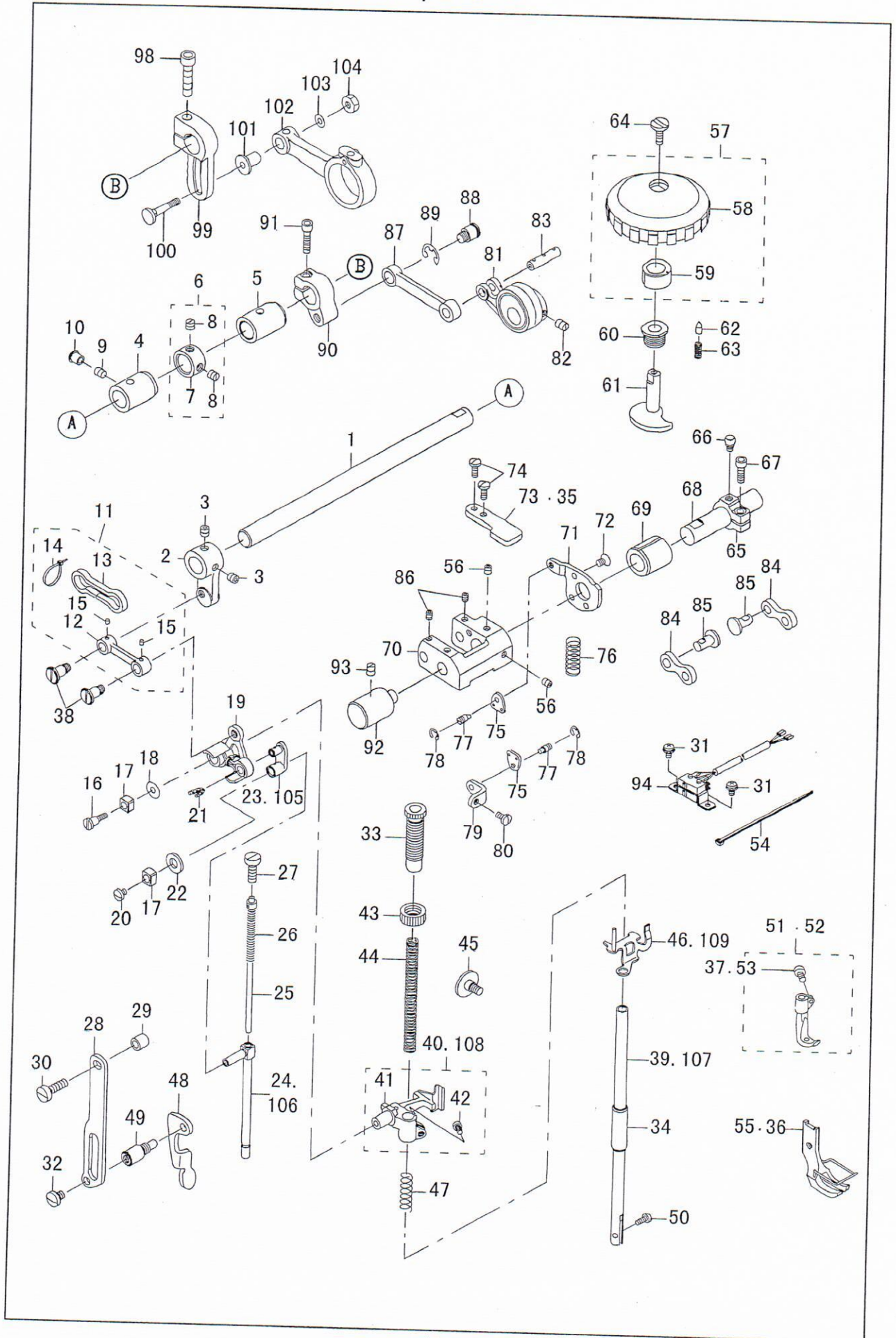
# 4. Upper feed mechanism components



#### 4.Upper feed mechanism components

1		21340401	UPPER FEED SHAFT	1
2		21340500	UPPER FEED FRONT ARM	1
3		SS8660612TP	SCREW 1/4-40 L=6	2
4		40039326	FRONT METAL	1
5		21378302	FEED SHAFT METAL	1
6		22904155	MAIN SHAFT THRUST COLLAR ASM.	1
7		22904106	MAIN SHAFT THRUST COLLAR	-1
8		SS8660610TP	SCREW 1/4-40 L=6	2
9		SS8150710SP	SCREW 15/64-28 L=7	1
10		TA0550604R0	RUBBER PLUG	1
11		40033027	UPPER FEED LINK ASM.	1
12		40033026	UPPER FEED LINK	-1
13		21347109	FELT	-1
14		EA9500B0000	CLIP CV-70S	-2
15		CQ3000000FO	OIL FELT	-2
16		40018339	SCREW	1
17		B1414555000	SLIDE BLOCK	1
18		WP0501046SC	WASHER 5 X 13 X 1	1
19		40033029	TRIANGULAR LEVER ASM.	1
20		SS7110510SP	SCREW 11/64-40 L=5	1
21		B1414555000	SLIDE BLOCK	1
22		10509701	FELT	1
23	#1	40018341	WALKING BAR DRIVING LINK	1
24		40033030	WALKING BAR A	1
25		B14670530A0	WALKING BAR ASM.	1
26		B1468053000	WALKING BAR SPRING	1
27		SS6151780SP	SCREW 15/64-28 L=17.0	1
28		21406509	UPPER FEED GUIDE PLATE	1
29		26225201	ROLLER	1
30		SS6151920SP	SCREW 15/64-28 L=19.0	1
31		SM6040800SP	SCREW	2
32		SS7150740SP	SCREW 15/64-28 L=7	1
33		21340906	PRESSER ADJUSTING SCREW	1
34		B1510155000	PRESSER BAR LOWER BUSHING	1
35		21339700	UPPER FEED STOPPER PLATE (B)	1
36	#1	040463		1
37	#1	SS4110815SP	SCREW 11/64-40 L=8	2
38		B3016141H00	SCREW	2
39	#1	B1501141H00	PRESSER BAR	1
40	#1	40033032	PRESSER BAR HOLDER A ASM.	1
41		40033031	PRESSER BAR HOLDER A	1
42		SS7110910TP	SCREW 11/64-40 L= 8.5	1
43		B1511555000	PRESSER SPRING REGULATOR NUT	1
44		B1502246000	PRESSER SPRING	1
45		SD0800481SP	HINGE SCREW D= 8 H= 4.9	1
46		21341151	THREAD RELEASE HOLDING PLATE	1
47		B1462053000	THREAD RELEASE SPRING	1
48		21406103	PRESSER LIFTER LEVER	1
49		21406608	GUIDE PLATE SPACER	1
50		SS6090910TP	SCREW 9/64-40 L=9	1
51	#1		WALKING FOOT ASM.	1
52	#2		WALKING FOOT ASM.	1
53		SS4110815SP	SCREW 11/64-40 L=8	1
54		EA9500B0000	CLIP CV-70S	1
55	#1	21444658	PRESSER FOOT ASM	1

# 4. Upper feed mechanism components

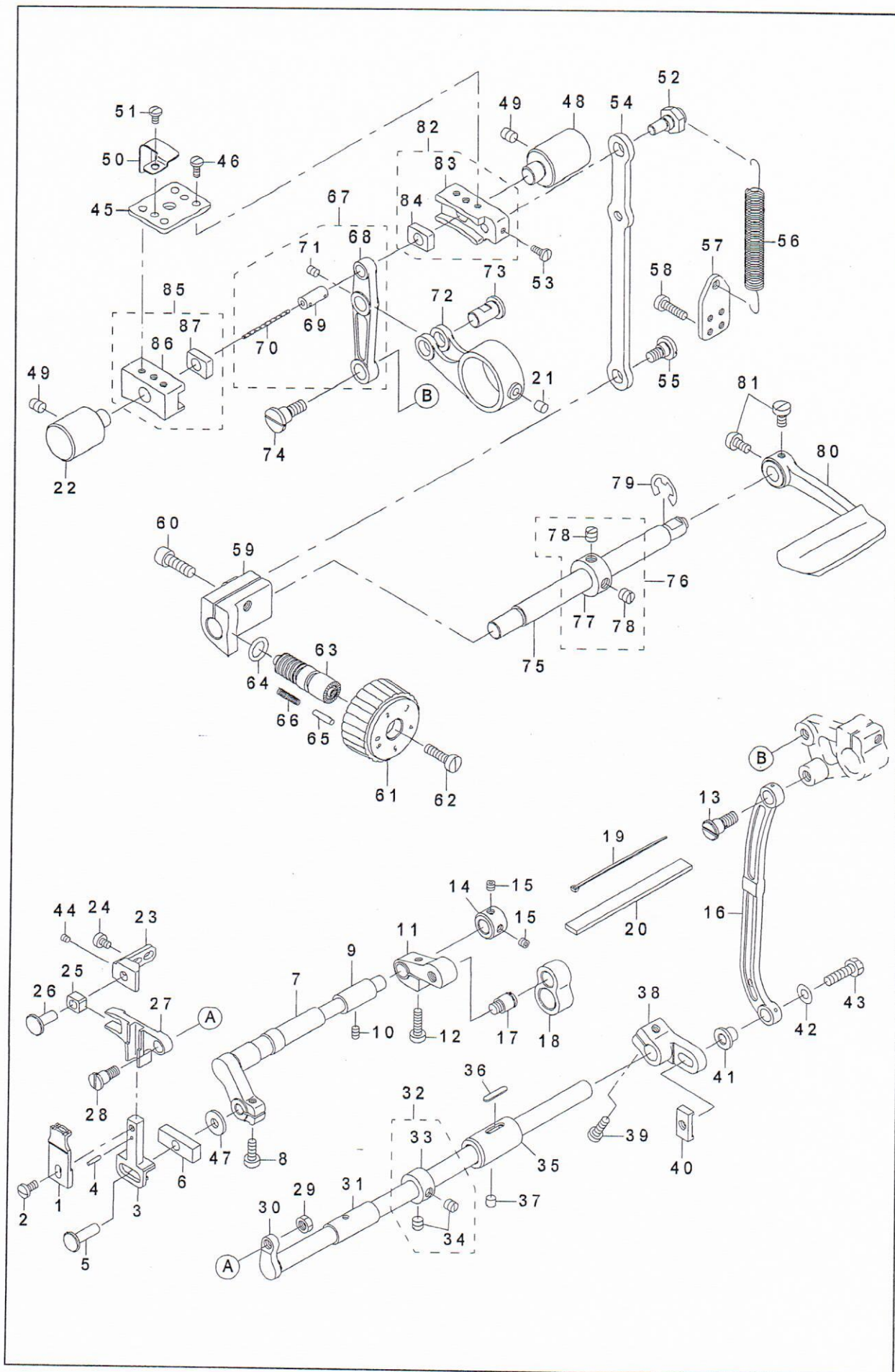


## 4. Upper feed mechanism components

56		SM8050502TP	SCREW	2
57		10774354	UPPER AND LOWER DIAL ASM.	1
58		10774305	VERTICAL DIAL	1
59		10774404	VERTICAL CAM	1
60		10715100	VERTICAL DIAL SHAFT BUSHING	1
61		10715001	VERTICAL ADJUSTING CAM	1
62		10715704	VERTICAL DIAL PIN	1
63		B152652700G	SPRING	1
64		SS6110630TP	SCREW 11/64-40 L=6	1
65		21341607	VERTICAL ADJUSTING ARM	1
66		10715308	PIN	1
67		SM6051402TP	SCREW M5X0.8 L=14	1
68		21341508	VERTICAL CHANGE BASE SHAFT	1
69		10718203	FEED SHAFT FRONT METAL	1
70		10714202	VERTICAL CHANGE BELT	1
71		21438106	STOPPER PLATE B	1
72		SM1050801SR	SCREW M5 L=8	1
73		21339700	UPPER FEED STOPPER PLATE (B)	1
74		SS4110815SP	SCREW 11/64-40 L=8	2
75		10713501	SPRING HOOK	2
76		10716504	VERTICAL SHAFT SPRING	1
77		B3416552000	CONNECTING ROD HINGE SCREW	2
78				2
79		21339809	UPPER FEED DOG SPRING HOOK	1
80		SS7110830SP	SCREW 11/64-40 L= 7.5	1
81		10713766	ECCENTRIC ROD (SET)	1
82		SS8660810TP	SCREW 1/4-40 L=8	2
83		10713808	CONNECTION LINK PIN B	1
84		10714509	CONNECTION LINK B	2
85		10714608	CONNECTION LINK B SUPPORT PIN	2
86		SS4110815SP	SCREW 11/64-40 L=8	2
87		21340005	UPPER FEED LINK (B)	1
88		21048707	HINGE SCREW	1
89		RE0800000KO	E-SHAPED SNAP RING (8MM)	1
90		21340302	UPPER FEED REAR ARM (B)	1
91		SM6052002TP	SCREW M5 L=20	1
92		21337803	FEED ADJUSTING BASE SUPPORT	1
93		SS8150822TP	SCREW 15/64-28 L=8	1
94	#3		SWITCH BASE	1
95	#3		SPEED REGULATING SWITCH	2
96	#3		WIRE	0.5
97	#3		SCREW M2.5*16	2
98	#3	SM6062502TP	SCREW M6 L=25	1
99	#3	21340203	UPPER FEED REAR ARM	1
100	#3	D1456055B00	HINGE SCREW	1
101	#3	D1455055B00	CONNECTING STUD	1
102	#3	21340104	UPPER FEED ROD	1
103	#3	WP0482086SD	WASHER 4.8X11.5X2	1
104	#3	NS6110530SP	NUT 11/64-40	1
105	#2	40018341	WALKING BAR DRIVING LINK	1
106	#2	40033030	WALKING BAR A	1
107	#2	B1501141H00	PRESSER BAR	1
108	#2	40033032	PRESSER BAR HOLDER A ASM.	1
109	#2	21341151	THREAD RELEASE HOLDING PLATE	1



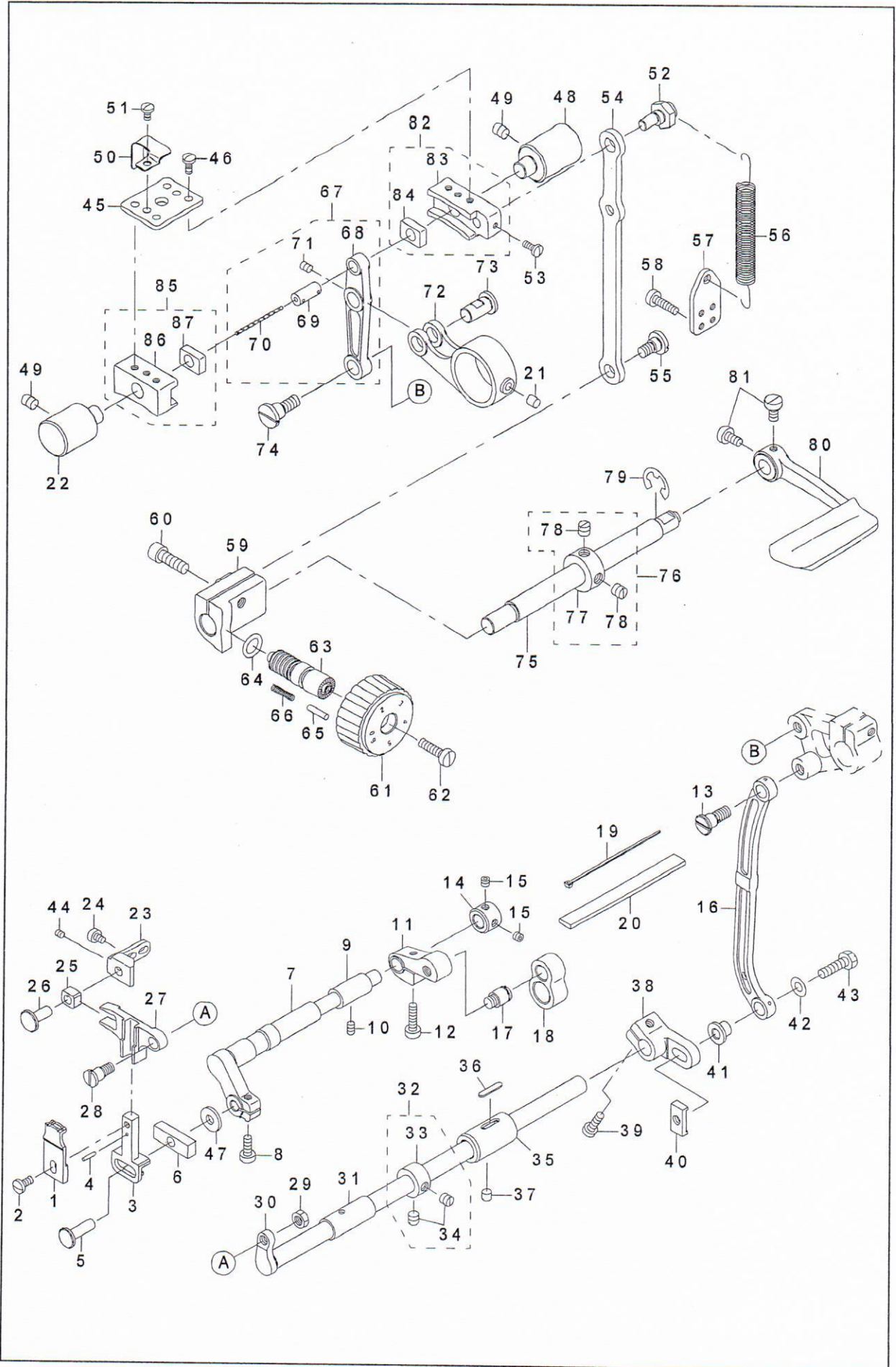
# 5.Feed mechanism components



## 5.Feed mechanism components

1	21435102	FEED DOG	1
2	SS7110840SP	SCREW 11/64-40 L=7.8	1
3	40091243	FEED BASE	1
4	PS0200102KH	SPRING PIN 2.0 X 10	1
5	40091250	FEED BASE PIN	1
6	40091254	FEED BASE SQUARE BLOCK	1
7	21429006	VERTICAL FEED SHAFT	1
8	SS6121220TP	SCREW 3/16-28 L=11.5	1
9	40091315	VERTICAL FEED SHAFT METAL	1
10	SS8110710SP	SCREW 11/64-40 L=6.5	1
11	21429105	VERTICAL FEED ARM	1
12	SS6121850TP	SCREW 3/16-28 L=18	1
13	SD0900701TP	HINGE SCREW D= 9 H= 7	1
14	21429709	VERTICAL FEED THRUST COLLAR	1
15	SM8050402TP	SCREW	2
16	10205201	NEEDLE BAR FRAME ROD	1
17	21048707	HINGE SCREW	1
18	21429204	VERTICAL FEED ROD	1
19	EA9500B0200	CABLE BAND 150	1
20	21429600	VERTICAL FEED ROD FELT	1
21	21387402	HORIZONTAL FEED ROD OIL FELT	1
22	21430400	FEED ADJUSTER SUPPORT	1
23	40091248	HORIZONTAL FEED BASE SUPPORT	1
24	SS6110610TP	SCREW 11/64-40 L=6	2
25	40091244	SQUARE BLOCK	1
26	40091245	HORIZONTAL FEED BASE SUPPORT P	1
27	40091242	HORIZONTAL FEED BASE	1
28	SD0790701SP	HINGE SCREW D=7.94 H=7	1
29	NS6660430SP	NUT 1/4-40	1
30	21427604	HORIZONTAL FEED SHAFT	1
31	B1607246000	BUSHING FRONT	1
32	CS111101CSH	THRUST COLLAR ASM. D=11.11 W=10	1
33	CS1111019SH	THRUST COLLAR D=11.11 W=10	-1
34	SS8660610TP	SCREW 1/4-40 L=6	2
35	21427703	HORIZONTAL FEED SHAFT D	1
36	B1806038000	OIL FELT	1
37	SS8150510TP	SCREW 15/64-28 L= 4.7	1
38	21428305	HORIZONTAL FEED ARM	1
39	SS6121610TP	SCREW 3/16-28 L=15.5	1
40	21428503	HORIZONTAL FEED ARM STOPPER	1
41	21428404	HORIZONTAL FEED ARM ROD	1
42	WPO621016SH	WASHER	1
43	SS9152130CP	SCREW 15/64-28 L=20.5	1
44	SS8110422TP	SCREW 11/64-40 L=4	2
45	21407408	FITTING PLATE	2
46	SS7110910TP	SCREW 11/64-40 L= 8.5	4
47	40090727	WASHER	1
48	21337803	FEED ADJUSTING BASE SUPPORT	2
49	SS8150822TP	SCREW 15/64-28 L=8	2
50	40038712	FELT HOLDER	1

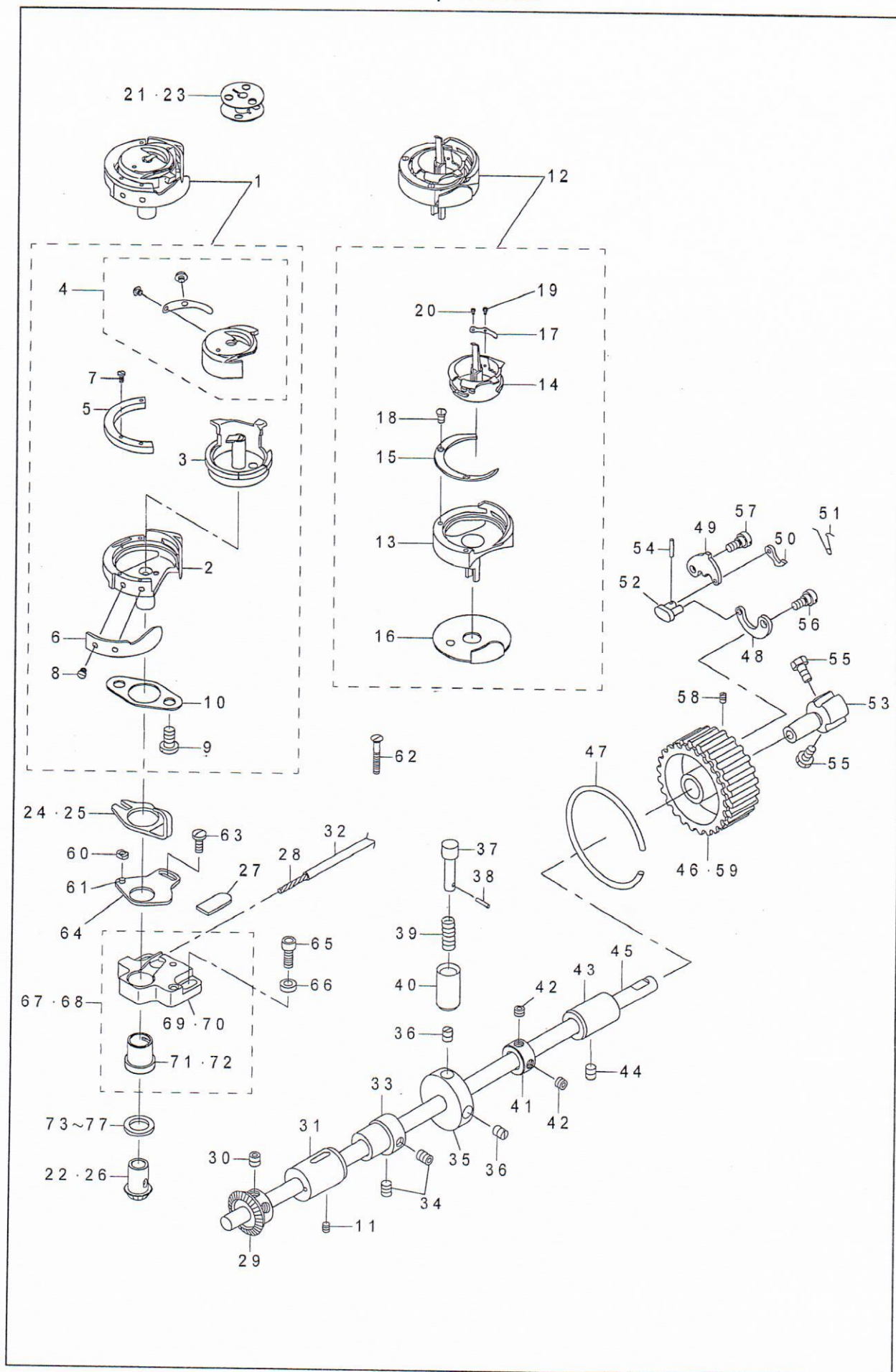
# 5.Feed mechanism components



## 5.Feed mechanism components

51	SS7110710SP	SCREW 11/64-40 L=7	2
52	21337902	ECCENTRIC PIN	1
53	SS7090910TP	SCREW 9/64-40 L= 8.5	2
54	21337308	FEED ADJUSTING ROD	1
55	SD0800402TP	HINGE SCREW D= 8 H=4	1
56	21337605	SPRING	1
57	40019926	SPRING HOOK	1
58	SS6111610SP	SCREW 11/64-40 L=16	2
59	21430202	FEED ADJUSTING	1
60	SM6061802TP	SCREW M6 L=18	1
61	21430301	FEED ADJUSTING DIAL	1
62	SS6121860SP	SCREW 3/16-28 L=18	1
63	22911804	FEED REGULATOR SCREW	1
64	RO092270200	RUBBER RING	1
65	22912000	FEED REGULATOR PIN	1
66	22912109	FEED REGULATOR PIN SPRING	1
67	21336656	FEED LINK ASM.	1
68	21336607	FEED LINK	-1
69	B1418761000	CONNECTING FORKED LINK PIN	-1
70	CQ202000000	OIL WICK	4
71	SM8050612TP	SCREW M5X6	1
72	21336706	FEED ROD A	1
73	21338207	FEED LINK PIN	1
74	SD1000801SH	HINGE SCREW D=10 H=8	1
75	21336300	BACKWARD FEED LEVER SHAFT	1
76	CS1201010SH	THRUST COLLAR ASM. D=12 W=10	1
77	CS1201011SH	THRUST COLLAR D=12 W=10	-1
78	SS8660610TP	SCREW 1/4-40 L=6	2
79	RE0900000K0	E-RING 9	1
80	21388004	REVERSE FEED ROCK SHAFT	1
81	SS6120930TP	SCREW 3/16-28 L=9	2
82	40081970	FEED ADJUSTING BASE	1
83	21407200	FEED ADJUSTING BASE	-1
84	21407309	SQUARE BLOCK	-1
85	40081969	FEED ADJUSTING BASE B SET	1
86	40038711	FEED ADJUSTING BASE B	-1
87	21407309	SQUARE BLOCK	1

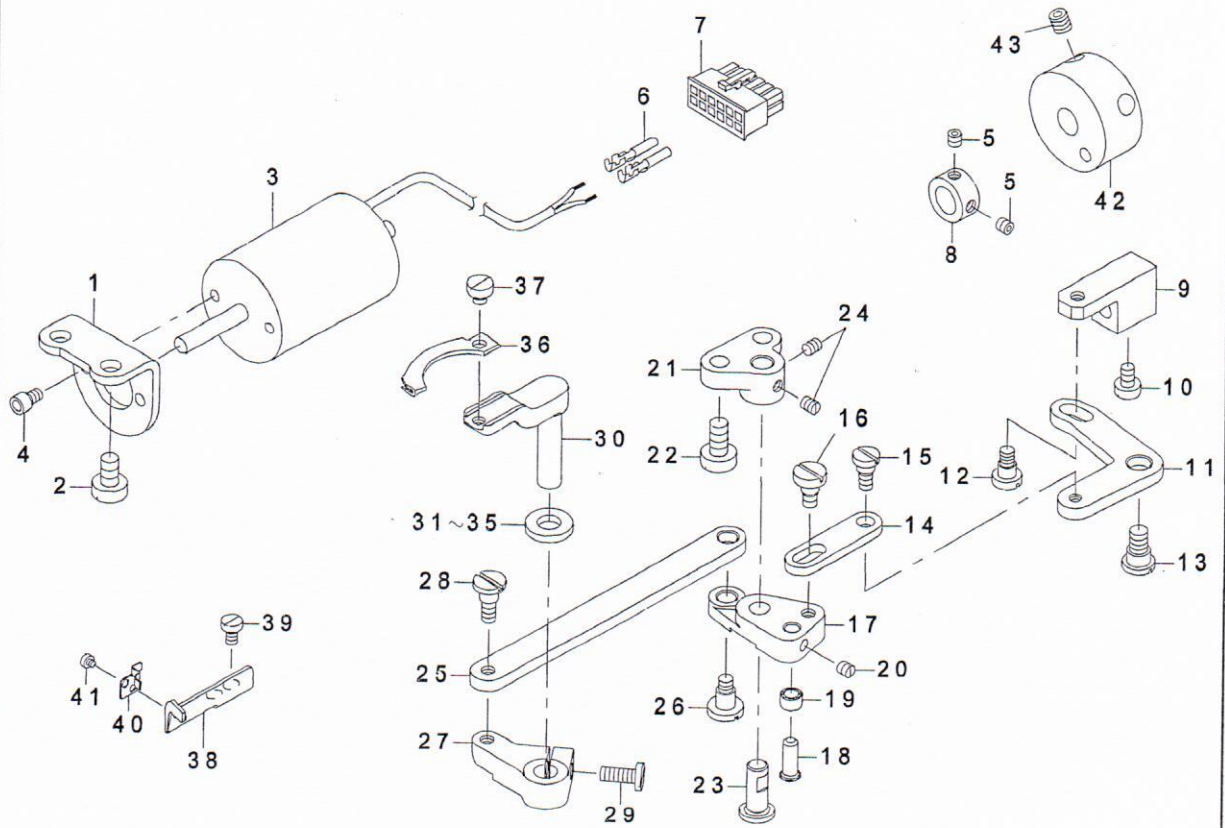
# 6. Hook shaft & lower shaft components



## 6.Hook shaft & lower shaft components

1	21229752	HOOK ASM.	1
2	21229703	HOOK	-1
3	21228101	INNER HOOK	-1
4	21229307	CAP	-1
5	21228200	INNER HOOK PRESSER	1
6	21229802	NEEDLE GUARD	-1
7	21228903	SCREW FOR INNER HOOK PRESSER	3
8	21229901	SCREW	-2
9	21229208	BACK PLATE SETSCREW	-2
10	21229406	BACK PLATE	-1
11	SS8110520TP	SCREW 11/64-40 L= 4.5	1
12	B18013400A0	HOOK ASM.	1
13	B1801340000	HOOK	-1
14	B1802340000	INNER HOOK	-1
15	B1803340000	INNER HOOK PRESSER	1
16	B1804340000	NEEDLE GUARD	-1
17	B1805340000	TENSION SPRING	-1
18	B1806340000	INNER HOOK PRESSER SETSCREW	2
19	B1807340000	TENSION SCREW	-1
20	B1808340000	TENSION SPRING SETSCREW	-1
21	B9117201000	BOBBIN	1
22	21227301	HOOK SHAFT GEAR	1
23	B9117051000	BOBBIN	1
24	21227400	INNER HOOK GUIDE	1
25	B1810340000	BOBBIN CASE OPENING LEVER	1
26	B1814340000	HOOK SHAFT GEAR	1
27	21431200	HOOK SHAFT LUBRICATION FELT	1
28	CQ202000000	OIL WICK	5
29	B1836246000A	LOWER SHAFT BEVEL GEAR	1
30	SS8660612TP	SCREW 1/4-40 L=6	3
31	B1803246000	BUSHING INTERMEDIATE	1
32	BT0500300EA	OIL TUBE	0.05
33	40092359	FEED VERTICAL TRIANGULAR CAM	1
34	SS8150822TP	SCREW 15/64-28 L=8	2
35	B1301340000	SAFETY CLUTCH DISK	1
36	SS8150710SP	SCREW 15/64-28 L=7	2
37	21223409	SAFETY CLUTCH PUSH BUTTON	1
38	PS0200102KH	SPRING PIN 2.0 X 10	1
39	B1639051000	SPRING	1
40	21223508	PUSH BUTTON CYLINDER	1
41	23102700	LOWER SHAFT THRUST HOLDER	1
42	SS8150432TH	SCREW 15/64-28 L=4	2
43	21427307	LOWER SHAFT METAL REAR	1
44	SS8150710TP	SCREW 15/64-28 L=7	1
45	21427208	LOWER SHAFT	1
46	21333505	LOWER SPROCKET	1
47	B1214019000	SPROCKET RING	1
48	B1305055000A	SAFETY CLUTCH SPRING	1
49	B1307055000	SAFETY CLUTCH HOOK	1
50	B1308055000	SAFETY CLUTCH COUNTER-HOOK	1
51	B1309055000	COUNTER-HOOK SPRING	1
52	B1310055000	SAFETY CLUTCH SMALL LINK	1
53	10503605	SAFETY BASE	1
54	B1314055000	SAFETY CLUTCH SMALL LINK PIN	1
55	SS6661110SP	SCREW 1/4-40 L=11	2
56	SD0640322TP	HINGE SCREW D= 6.35 H= 3.2	1
57	SD0640322TP	HINGE SCREW D= 6.35 H= 3.2	1
58	SS8090540SP	SCREW 9/64-40 L=5	1
59	21441605	LOWER SPROCKET	1
60	B1827246000	SLIDE BLOCK	1
61	B1826246000	SLIDE BLOCK PIN	1
62	SS1092810SP	SCREW 9/64-40 L=25.4	1
63	SS7091110TP	SCREW 9/64-40 L=10.5	1
64	21231204	ADJUSTING PLATE	1
65	SM6051552TP	SCREW M5 L=15	2
66	40090530	WASHER	2
67	40029253	HOOK SHAFT BASE ASM.	1
68	40091907	HOOK SHAFT BASE ASM.	1
69	40029250	HOOK SHAFT BASE	1
70	40091897	HOOK SHAFT BASE	1
71	40029246	HOOK SHAFT METAL	1
72	40029247	HOOK SHAFT METAL	-1
73	#01 B1820246000	WASHER	1
74	#01 B182024600A	WASHER A	1
75	#01 B182024600B	WASHER B	1
76	#01 B182024600C	WASHER C	1
77	#01 B182024600D	WASHER	1

# 7.Feed mechanism components

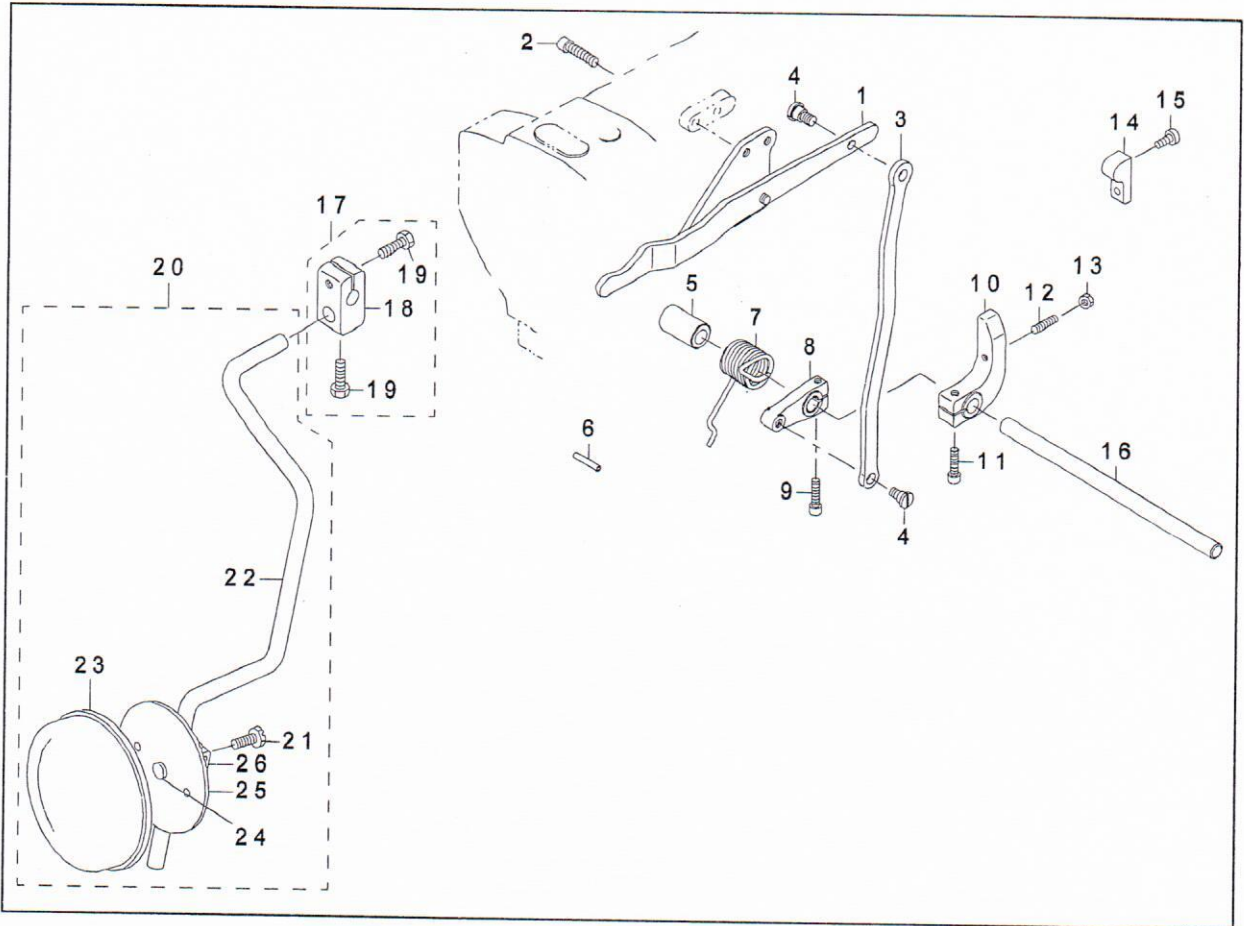


## 7.Feed mechanism components

1	21439005	SOLENOID FITTING PLATE	1
2	SS6151040SP	SCREW 15/64-28 L=10	2
3	23104201	THREAD CUTTING SOLENOID	1
4	SM6040602TP	SCREW M4 L=6	2
5	SS8110422TP	SCREW 11/64-40 L=4	2
6	HK03464000B	PIN CONTACT	2
7	HK034610120	HOUSING 12P	1
8	CS0950816SH	THRUST COLLAR D=9.5 W=8	1
9	21439104	THREAD TRIMMER SOLENOID ARM	1
10	SS6110710TP	SCREW 11/64-40 L= 6.5	2
11	21439203	THREAD TRIMMER SOLENOID LINK	1
12	SD0600452TP	HINGE SCREW D=6 H=4.5	1
13	SD0790451SP	HINGE SCREW D= 7.94 H= 4.5	1
14	21439302	SOLENOID CONNECTING LINK	1
15	SD0600352SP	HINGE SCREW	1
16	SD0600321SP	HINGE SCREW D=6 H=3.2	1
17	21439401	FOLLOWER ARM	1
18	21439500	CAM ROLLER SHAFT	1
19	21440508	THREAD TRIMMER CAM ROLLER	1
20	SS8110410TP	SCREW 11/64-40 L= 3.5	1
21	21439609	FOLLOWER BASE	1
22	SS6151210SP	SCREW 15/64-28 L=12	2
23	21439708	FOLLOWER SHAFT	1
24	SS8110422TP	SCREW 11/64-40 L=4	2
25	21439807	THREAD TRIMMER LINK	1
26	SD0640631TP	HINGE SCREW D=6.35 H=6.3	1
27	21439906	MOVING KNIFE ARM	1
28	SD0640451TP	HINGE SCREW D=6.35 H=4.5	1
29	SS6121210SP	SCREW 3/16-28 L=12	1
30	21440003	MOVING KNIFE BASE	1
31	#01 B185351200AA	HOOK SHAFT WASHER A	1
32	#01 B185351200BA	HOOK SHAFT WASHER B	1
33	B185351200CA	HOOK SHAFT WASHER C	1
34	#01 B185351200D	HOOK SHAFT WASHER	1
35	#01 B185351200E	HOOK SHAFT WASHER	1
36	21440607	MOVING KNIFE	1
37	SS6110480SP	SCREW 11/64-40 L=4.3	1
38	21440102	FIXING KNIFE	1
39	SS6090620TP	SCREW	2
40	21440201	CLAMP PLATE	1
41	SS6060220SP	SCREW 3/32-56 L= 2.0	2
42	21440300	THREAD TRIMMER CAM	1
43	SS8660612TP	SCREW 1/4-40 L=6	2

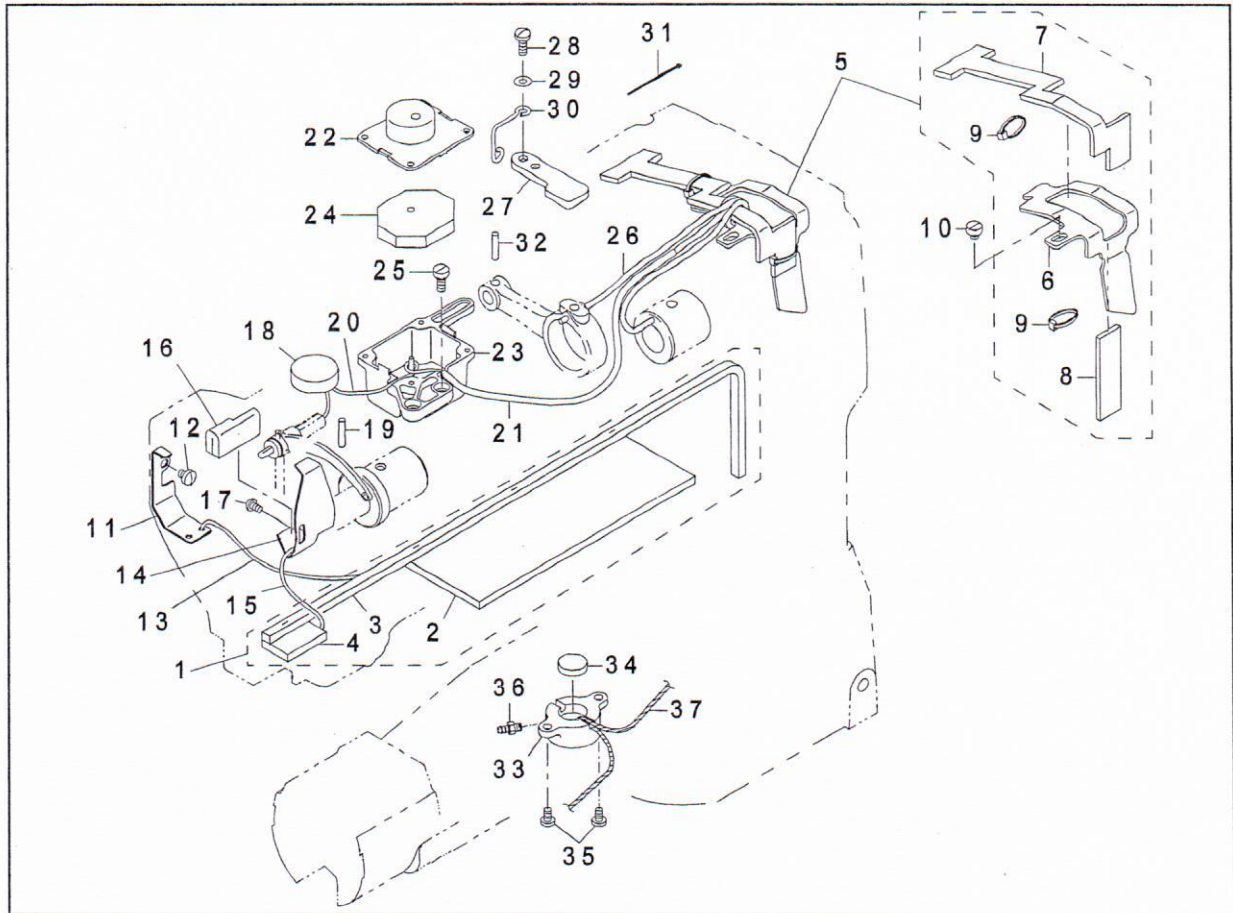


## 8.Knee lifting cimponents



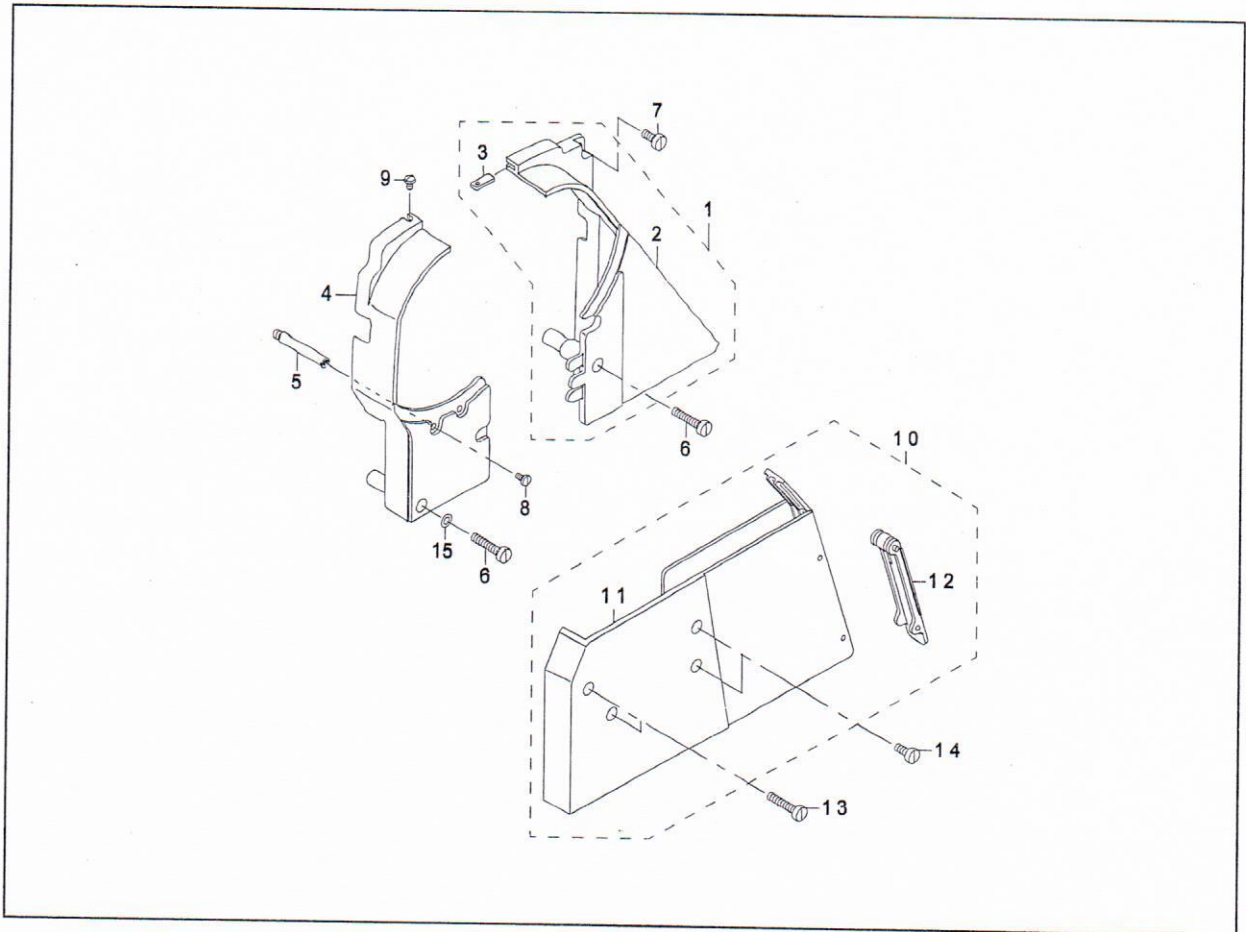
1	21432851	KNEE LIFTER LEVER ASM.	1
2	SM6062502TP	SCREW M6 L=25	2
3	21432703	KNEE LIFTER CONNECTING PLATE	1
4	SD0790451SP	HINGE SCREW D= 7.94 H= 4.5	2
5	21433008	KNEE LIFTER CONNECTING PLATE	1
6	PS0400222K0	SPRING PIN	1
7	21433107	KNEE LIFTER SPRING	1
8	21405709	KNEE LIFTER ARM	1
9	SM6052002TP	SCREW M5 L=20	1
10	21432604	KNEE LIFTER STOPPER ARM	1
11	SM6052002TP	SCREW M5 L=20	1
12	SM8052502TP	SCREW M5X0.8 L=25	1
13	NM6050001SD	NUT M5X0.8	1
14	21433206	STOPPER ARM	1
15	SS6121210SP	SCREW 3/16-28 L=12	2
16	21432505	KNEE LIFTER SHAFT	1
17	22932453	BRACKET ASM.	1
18	22932404	BRACKET	1
19	22934707	SCREW	-1
20	21433354	KNEE PRESS PLATE ASM.	-2
21	SM9061203SE	SCREW M6 L=12	1
22	21433305	KNEE PRESS LEVER	-1
23	22934509	KNEE PAD PLATE COVER	1
24	22934400	KNEE PAD PLATE RUBBER	1
25	22934202	KNEE PAD PLATE	-1
26	22934301	KNEE PAD PLATE SUPPORT	-1
			1

## 9. Lubrication components



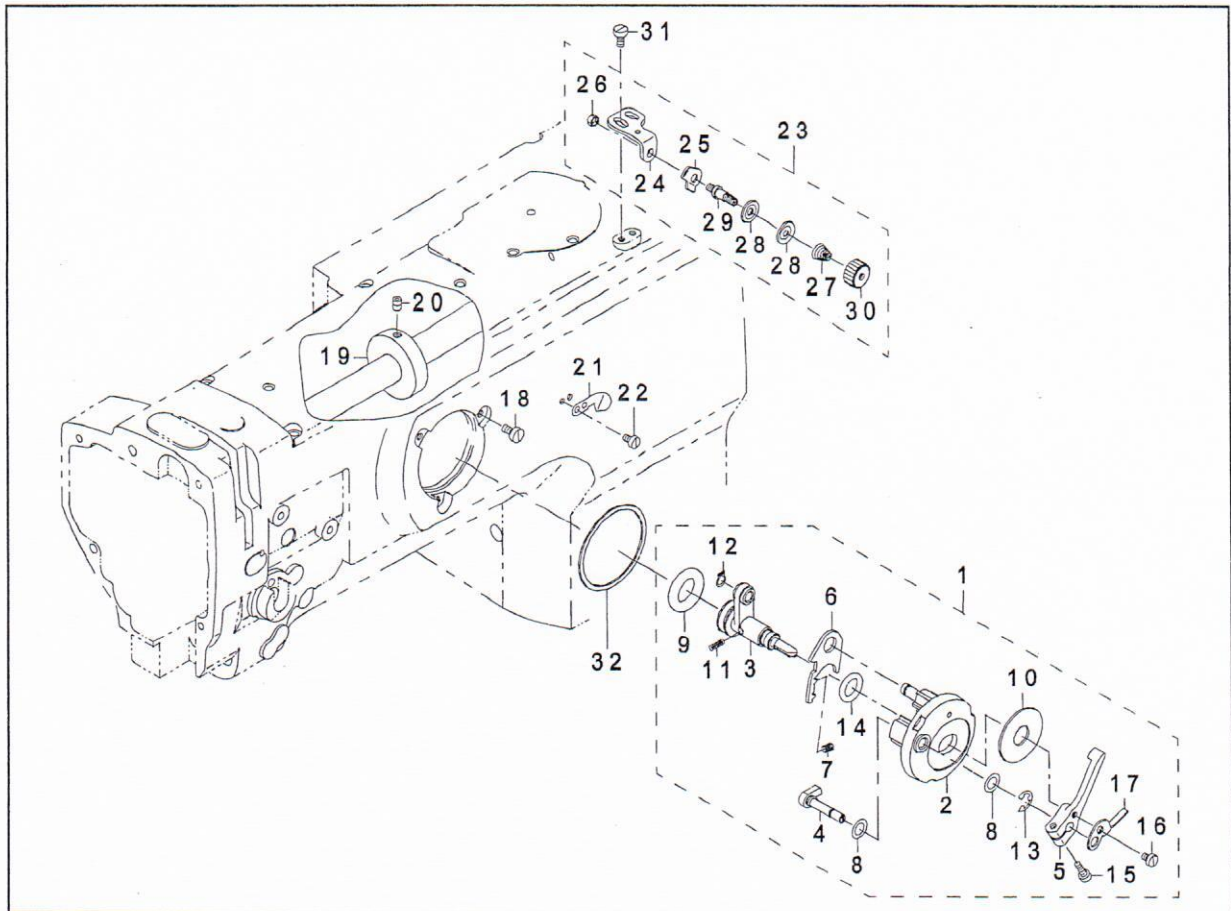
1	21345756	ARM ONCE THROUGH OIL FELT ASM.	1
2	21345707	ARM ONCE THROUGH FELT A	1
3	21345806	FELT B	1
4	21345905	FACE ONCE THROUGH FELT	-1
5	21346358	FELT SUPPORT ASM.	1
6	21346309	FELT	1
7	21346507	FEED CHANGE FELT	1
8	21346408	FELT	-1
9	EA9500B0000	CLIP CV-70S	-2
10	SS6110480SP	SCREW 11/64-40 L=4.3	1
11	21340708	UPPER FEED OIL BAR PLATE	1
12	SS7110510SP	SCREW 11/64-40 L=5	1
13	CQ202000000	OIL WICK	2
14	21347000	TAKE-UP OIL PLATE	1
15	CQ202000000	OIL WICK	5
16	21347208	TAKE-UP LUBRICATION FELT	1
17	SS3090610SP	SCREW 9/64-40 L=6	1
18	21346002	FELT	1
19	B1412051000	FELT	1
20	CQ252000000	OIL WICK	3
21	BT0500300EA	OIL TUBE	0.25
22	21407507	OIL TANK A	1
23	21407606	OIL TANK B	1
24	21407705	FELT	2
25	SS6111010SP	SCREW 11/64-40 L= 9.5	2
26	CQ202000000	OIL WICK	2
27	21339700	UPPER FEED STOPPER PLATE (B)	1
28	SS7111120TP	SCREW	2
29	WP0450801SD	WASHER 4.5X10X0.8	1
30	22620504	OIL WICK HOLDER	1
31	EA9500B0000	CLIP CV-70S	1
32	PS0500202KP	SPRING PIN 5X20	1
33	21433800	OIL TANK	1
34	B1203051000	OIL FELT	1
35	SS7110710SP	SCREW 11/64-40 L=7	2
36	SQ1110401MZ	CONNECTING SCREW	1
37	CQ202000000	OIL WICK	4
38	B1140051000	TAKE-UP OIL SPLASHER	1

# 10. Belt cover



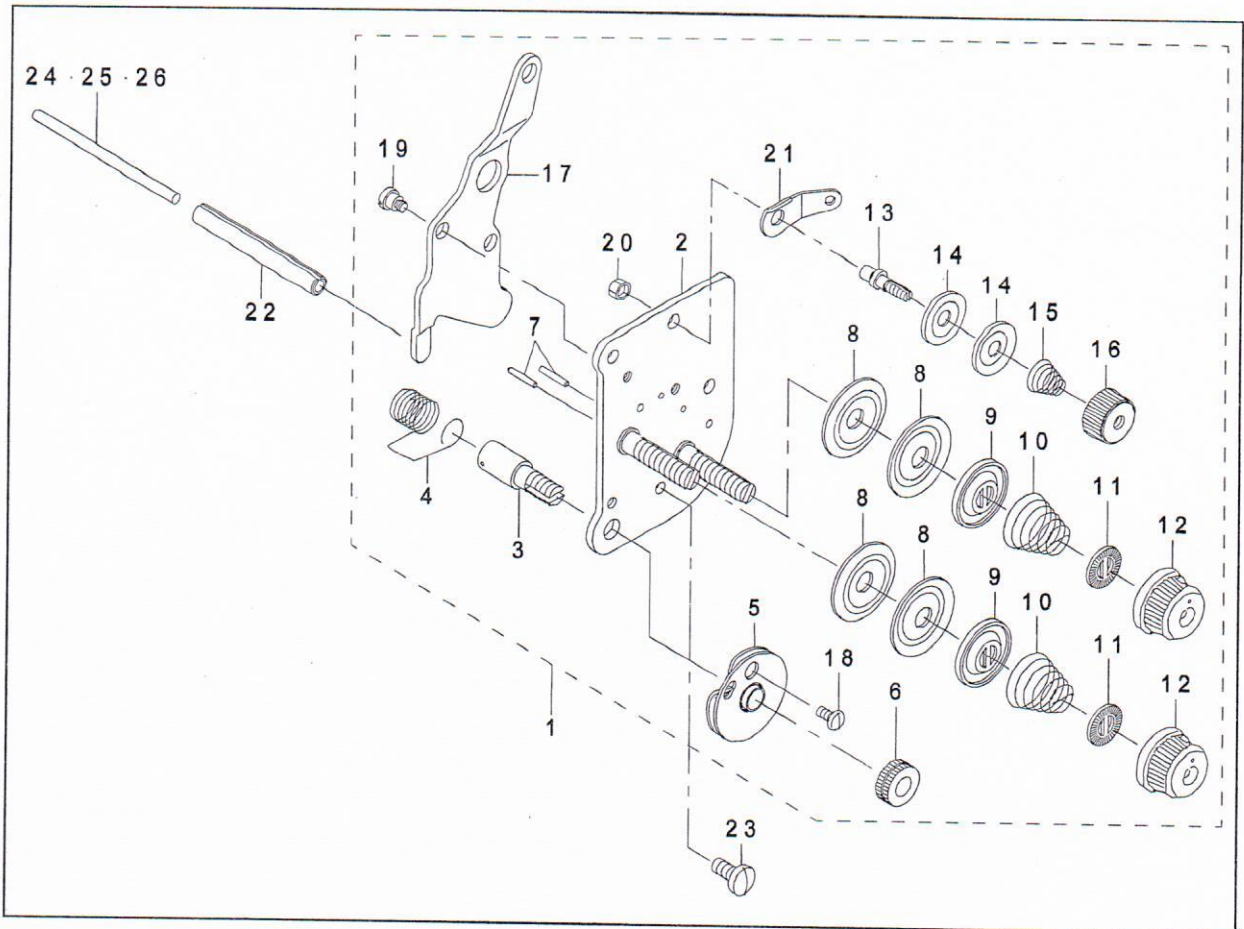
1	21351150	BELT COVER ASM. (RIGHT)	1
2	21351101	BELT COVER (RIGHT)	-1
3	21351002	BELT COVER AUXILIARY PLATE	1
4	21351200	BELT COVER (LEFT)	1
5	D8232241E00	BELT COVER SUPPORT A	1
6	SS6153040SP	SCREW 15/64-28 L=30	2
7	SS6151440SP	SCREW 15/64-28 L=14	1
8	SS7110840SP	SCREW 11/64-40 L=7.8	1
9	SS5110740TP	SCREW 11/64-40 L= 6.5	1
10	21434451	BELT COVER ASM. LOWER	1
11	21434402	BELT COVER LOWER	-1
12	21434501	BELT COVER COVER	-1
13	SS6153040SP	SCREW 15/64-28 L=30	2
14	SS6151440SP	SCREW 15/64-28 L=14	2
15	WP0612076SP	WASHER 6. 1X11X2	1

# 11.Lower thread winder mechanism components



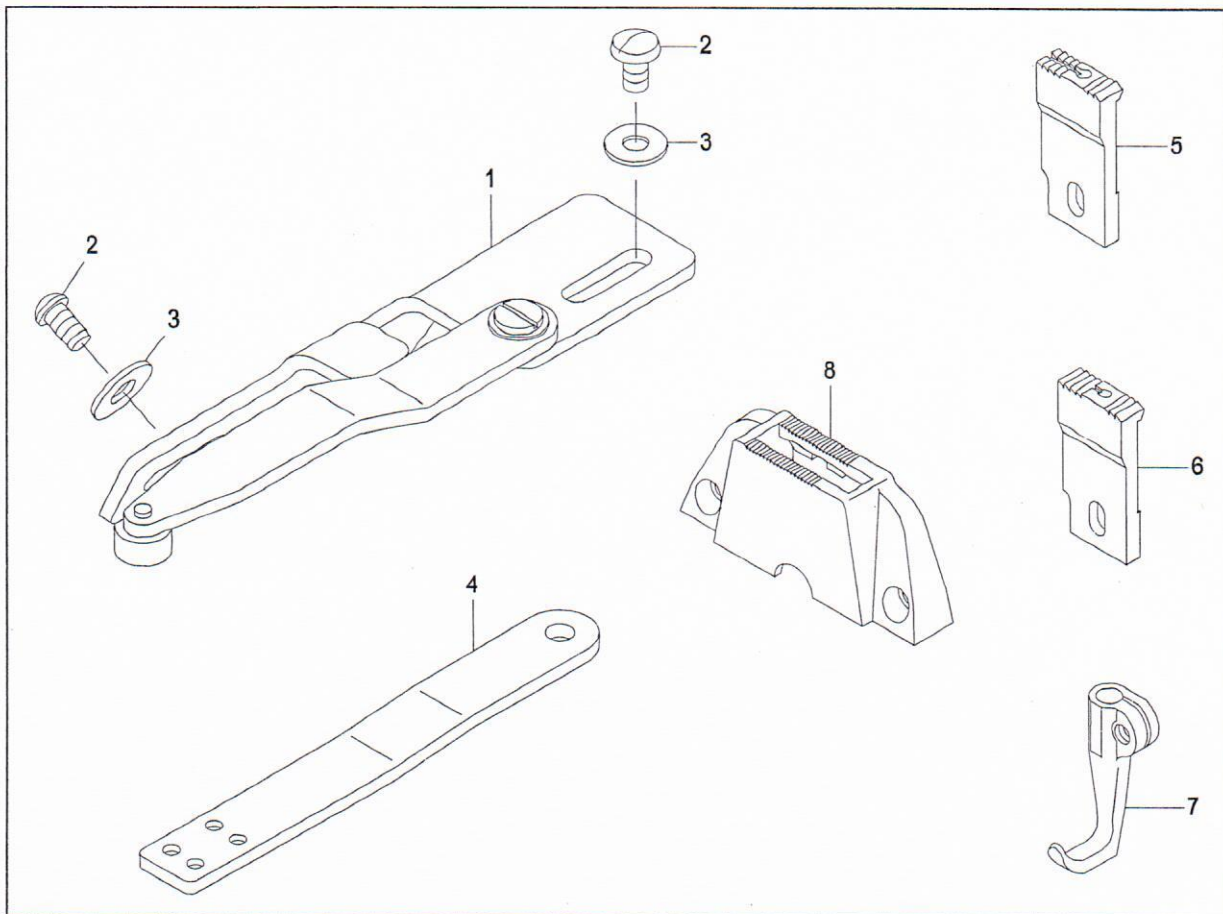
1	21357967	BOBBIN DEVICE ASM.	1
2	22537658	BOBBIN FITTING BASIS COMPL.	1
3	21357959	BOBIN SHAFT COMPL.	-1
4	22538151	BOBBIN CAM SHAFT COMPL.	-1
5	23636202	BOBBIN LEVER	1
6	21356001	ADJUSTING PLATE	1
7	B152989000CA	PRESSUR FOOT SPRING	1
8	10618304	VERTICAL ROLLER WASHER	-2
9	21358205	BOBBIN FRICTION GEAR	-1
10	B3205210000	CUSHION	-1
11	B1148555000	SPRING	-1
12	RC0560711KP	RETAINING RING	-1
13	RE0500000K0	E-RING	1
14	RO092270200	RUBBER RING	-1
15	SS7091410SP	SCREW 9/64-40 L=13.5	-1
16	SS6090520SP	SCREW 9/64-40 L= 5.0	1
17	14512503	BOBBIN ADJUSTING PLATE	1
18	SS6110810TP	SCREW 11/64-40 L=8	3
19	10704807	BOBBIN FRICTION WHEEL	1
20	SM8050602TP	SCREW M5 L=6	2
21	10502300	THREAD CUTTER	1
22	SS6090620TP	SCREW	1
23	21355755	LOWER THREAD GUIDE ASM.	1
24	21355706	FITTING BASE	1
25	D3162555B00	THREAD GUIDE	-1
26	NS6110310SP	NUT 11/64-40	-1
27	D3168555H0B	TENSION SPRING NO.1	-1
28	B3214047000	BOBBIN WINDER TENSION DISC	-2
29	21378708	THREAD TENSION POST	1
30	11072402	THREAD TENSION NUT	1
31	SM6040800SP	SCREW	2
32	22538706	PACKING	1

## 12.Thread tension components



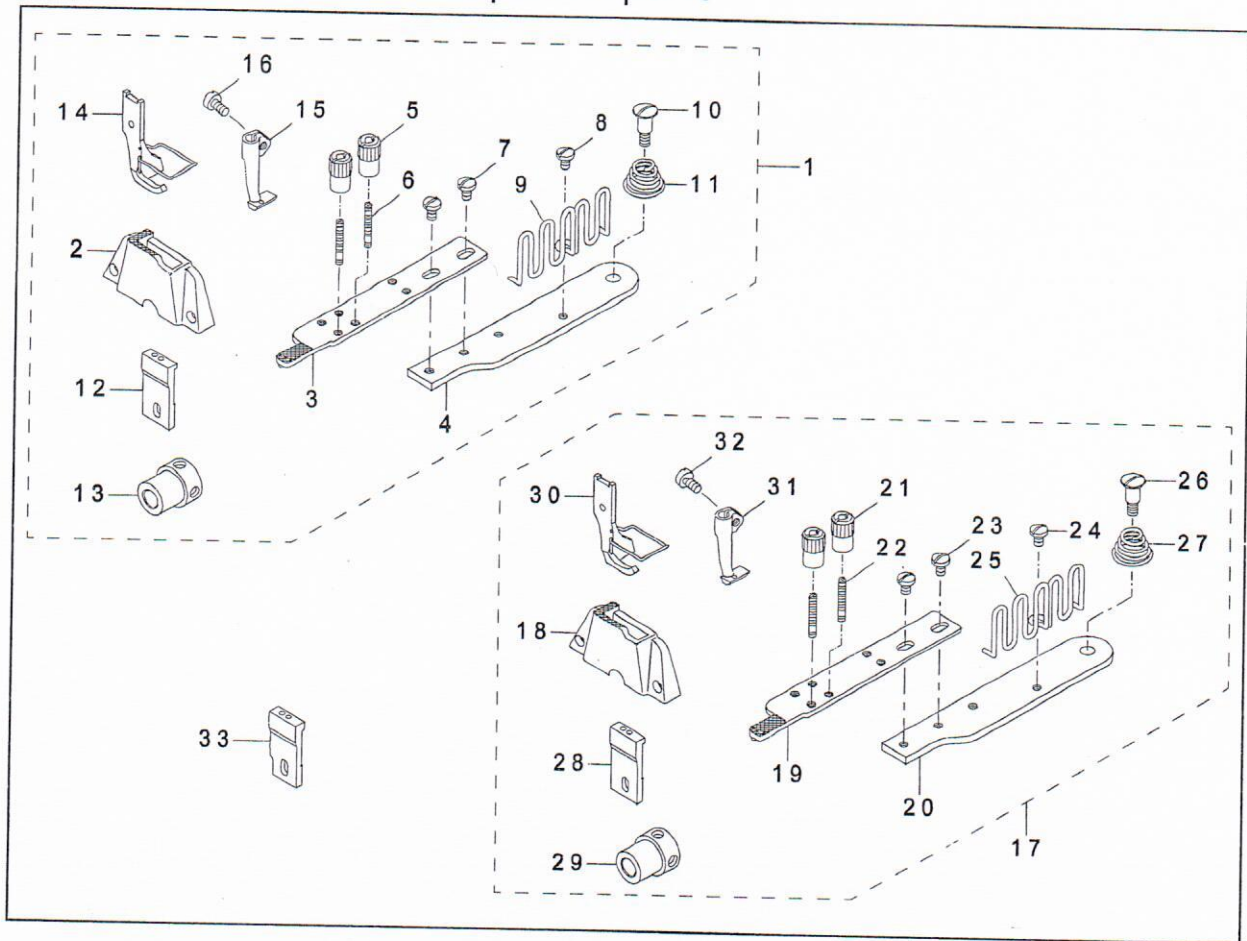
1	21441068	THREAD TENSION ASM.	1
2	21441050	TENSION POST COMPL.	-1
3	10320109	SCREW STUD	-1
4	B3128520000	TENSION SPRING	-1
5	B31370510A0	TAKE-UP SPRING GUIDE DISC ASM.	-1
6	B3125012000	THREAD TENSION NUT	1
7	22618201	TENSION RELEASE PIN A	-2
8	B3126012000	THREAD TENSION DISK	-4
9	22617906	THREAD TENSION DISK PRESSER	2
10	B3129526000	TENSION SPRING (1.2)	2
11	B3120125000	ROTATING STOPPER	-2
12	11956802	THREAD TENSION KNOB BLUE	-2
13	10124204	THREAD TENSION POST A	1
14	10741106	FIRST THREAD TENSION PLATE	2
15	11045101	THREAD TENSION SPRING	-1
16	11072402	THREAD TENSION NUT	1
17	21441100	TENSION RELEASE PLATE	1
18	SS4080620TP	SCREW 1/8-44 L=6	1
19	SD0470281SP	HINGE SCREW D=4.7 H=2.8	2
20	NS6110310SP	NUT 11/64-40	-1
21	D3162555B00	THREAD GUIDE	1
22	PS0600502KP	SPRING PIN	1
23	SS7110910TP	SCREW 11/64-40 L= 8.5	2
24	21348206	TENSION RELEASE BAR	1
25	10321107	TENSION RELEASE BAR	1
26	23006406	TENSION RELEASE BAR	1

### 13. Gauge components—optionals



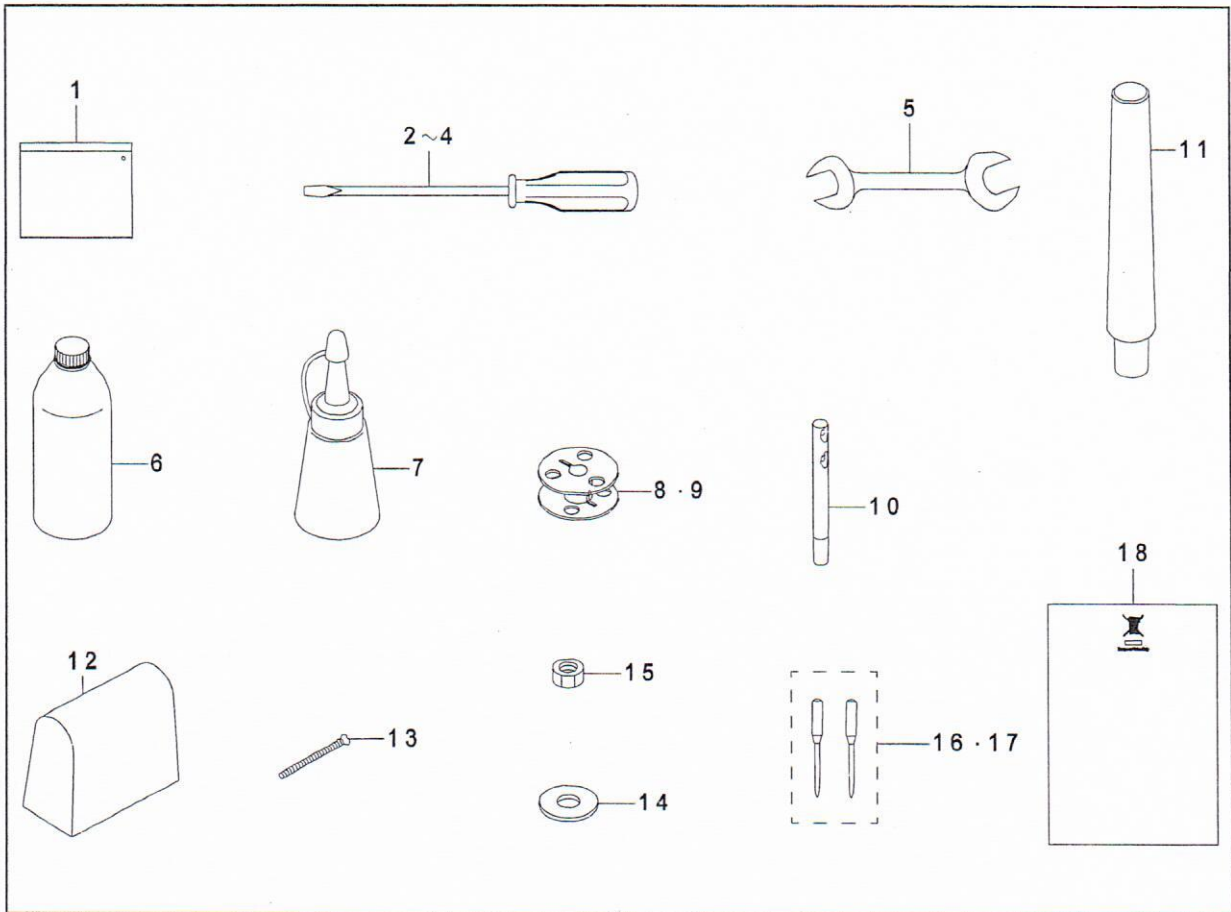
1	B91013400A0	EDGE GUIDE ASM.	1
2	MAM22709000	SCREW	2
3	WP0551016SH	WASHER 5. 5X13X1	2
4	B9104340000	FIXING BINDER FITTING PLATE.	1
5	21225305	FEED DOG 3. 2MM	1
6	21225008	FEED DOG	1
7	21231006	WALKING FOOT	1
8	21445606	THROAT PLATE	1

# 14. Binder components—optional parts



1	21434857	LS-1341 BINDER SET	1
2	21427406	THROAT PLATE	-1
3	MAQ14302000	FEED PLATE A ASM.	-1
4	MAQ14303000	FEED PLATE B	-1
5	MAQ09205000	BINDER LOCK NUT	-1
6	MAQ09204000	BINDER SETSCREW	2
7	SS7110510SP	SCREW 11/64-40 L=5	-2
8	SS7110510SP	SCREW 11/64-40 L=5	2
9	MAQ09206000	TAPE GUIDE	1
10	SD0721112SN	HINGE SCREW D=7.24 H=11.1	-1
11	21232004	SPRING	-1
12	MAQ14306000	FEED	-1
13	40011964	FEED VERTICAL CAM	1
14	MAQ093080A0	PRESSER FOOT ASM.	1
15	MAQ09307000	WALKING FOOT	-1
16	SS6110710TP	SCREW 11/64-40 L= 6.5	-1
17	21434758	LS-1340 BINDER SET	1
18	MAQ14301000	THROAT PLATE	1
19	MAQ14302000	FEED PLATE A ASM.	-1
20	MAQ14303000	FEED PLATE B	-1
21	MAQ09205000	BINDER LOCK NUT	-1
22	MAQ09204000	BINDER SETSCREW	2
23	SS7110510SP	SCREW 11/64-40 L=5	-2
24	SS7110510SP	SCREW 11/64-40 L=5	2
25	MAQ09206000	TAPE GUIDE	1
26	SD0721112SN	HINGE SCREW D=7.24 H=11.1	-1
27	21232004	SPRING	1
28	MAQ14306000	FEED	-1
29	40011964	FEED VERTICAL CAM	1
30	MAQ093080A0	PRESSER FOOT ASM.	1
31	MAQ09307000	WALKING FOOT	-1
32	SS6110710TP	SCREW 11/64-40 L= 6.5	-1
33	21225404	FEED	1
			1

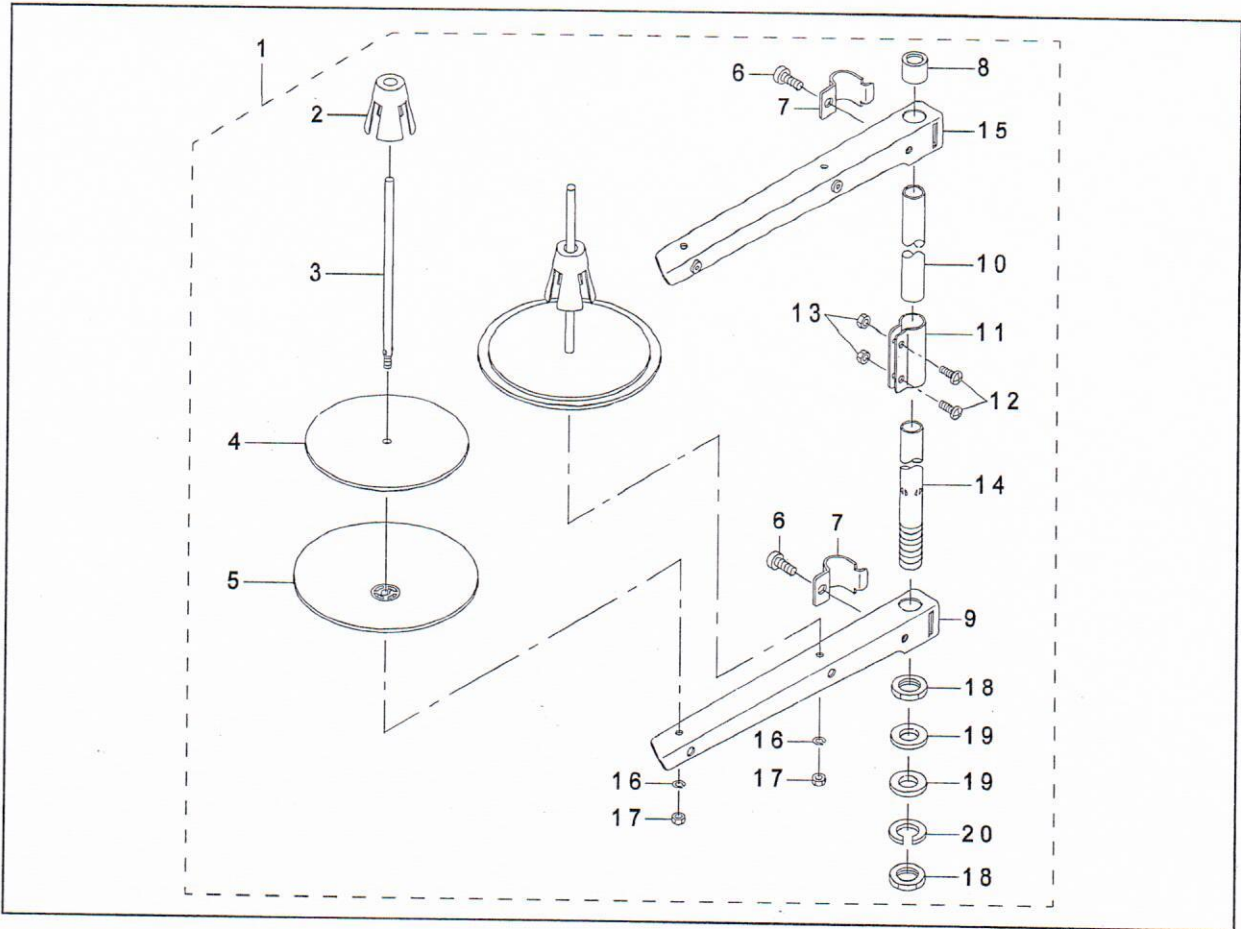
## 15. Accessories parts



1	B9101552000	ACCESSORY BOX	1
2	22933006	SCREW DRIVER LARGE	1
3	22933105	SCREW DRIVER MIDDLE	1
4	22933204	SCREW DRIVER SMALL	1
5	B9113012000	WRENCH (9X10)	1
6	MDFRX2700C0	NEW DEFRIX OIL NO. 2(700CC)	1
7	J1067000000	OILER	1
8	B9117201000	BOBBIN	1
9	B9117051000	BOBBIN	1
10	22958300	NEEDLE THREAD GUIDE PIN	1
11	B820424500A	FRAME SUPPORT BAR	1
12	40048536	HEAD_COVER	1
13	B9130245000	BOLT	4
14	WP0751576SD	WASHER 7. 5X19X1. 5	4
15	NM6060001SD	NUT M6	4
16	M13517B1602	NEEDLE 135X17 #160-2	1
17	M13517B1402	NEEDLE 135X17 #140-2	1
18	CM600100201	WEEE INFORMATION SHEET	1

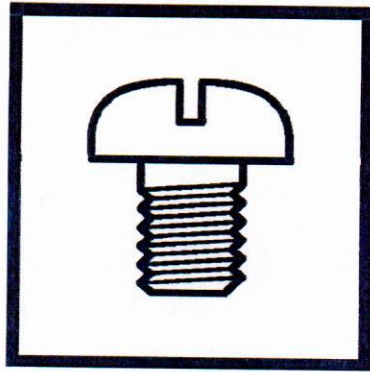


# 16.Thread stand components



1	22930358	THREAD STAND ASM.	1
2	22931109	SPOOL RETAINER	-2
3	22931000	SPOOL PIN	-2
4	22930903	SPOOL REST CUSHION	2
5	22930804	SPOOL REST	-2
6	SM6061610SC	SCREW M6 L=16	-2
7	22930705	THREAD GUIDE ARM JOINT	2
8	22931406	SPOOL REST ROD RUBBER CAP	-1
9	22930507	SPOOL REST ARM	-1
10	22930408	SPOOL REST ROD UPPER	-1
11	22931307	SPOOL REST ROD JOINT	1
12	SM4051405SE	SCREW M5 L=14	-2
13	NM6050001SE	NUT M5	-2
14	22930309	SPOOL REST ROD LOWER	-1
15	22930556	THREAD STANDING ARM ASM.	-1
16	WS0510002KN	SPRING WASHER	2
17	NM6050001SE	NUT M5	-2
18	NM6160511SE	NUT M16X1.5	2
19	WP1612616SE	WASHER 16X30X2.6	2
20	WS1643202KR	SPRING WASHER	1

**GLOBAL**



**GLOBAL**  
**PARTS**